



Trend Analysis Report

Lake Land College 2011

Office of Institutional Research

M. Lynn Breer, PhD

 **Lake Land College**

Table of Contents

Introduction	1
Section A: District Demographics	3
Section B: Enrollment	12
Section C: Student Demographics and Information	27
Section D: Tuition, Fees, and Other Financial Data	36

Table of Figures

FIGURE 1: POPULATION CHANGE	4
FIGURE 2: MEDIAN INCOME	4
FIGURE 3: EDUCATIONAL ATTAINMENT	5
FIGURE 4: UNEMPLOYMENT.....	6
FIGURE 5: EMPLOYMENT BY MANUFACTURING	7
FIGURE 6: EMPLOYMENT BY HEALTHCARE AND SOCIAL ASSISTANCE	8
FIGURE 7: EMPLOYMENT BY RETAIL TRADE	9
FIGURE 8: EMPLOYMENT BY EDUCATIONAL SERVICES10	
FIGURE 9: EMPLOYMENT BY ACCOMMODATION AND FOOD SERVICES.....	11
FIGURE 11: NUMBER OF DISTRICT HIGH SCHOOL GRADUATES AND ENROLLEES AFTER GRADUATION.....	12
FIGURE 12: PERCENT OF DISTRICT HIGH SCHOOL GRADUATES ENROLLED IN FOLLOWING FALL AND YEAR AFTER GRADUATION	12
FIGURE 13: HIGH SCHOOL GRADUATES ENROLLMENT WITHIN ONE YEAR OF GRADUATION BY SCHOOL DISTRICT ..	13
FIGURE 14: ANNUAL HEADCOUNT COMPARED TO AVERAGE HEADCOUNT OF ALL ILLINOIS COMMUNITY COLLEGES	14
FIGURE 15: ANNUAL HEADCOUNT	14
FIGURE 16: ANNUAL STUDENT FTE: 10 TH DAY AND END OF TERM COMPARISON	15
FIGURE 17: TOTAL ANNUAL CREDIT HOURS.....	16
FIGURE 18: ANNUAL END OF TERM HEADCOUNT	16
FIGURE 19: ANNUAL END OF TERM TOTAL CREDIT HOURS	16
FIGURE 20: ANNUAL END OF TERM HEADCOUNT	17
FIGURE 21: ANNUAL END OF TERM TOTAL CREDIT HOURS	17
FIGURE 22: ENROLLMENT BY DISTRICT STATUS FOR 2010 FISCAL YEAR.....	18
FIGURE 25: ENROLLMENT BY DOC LOCATION	20
FIGURE 26: ANNUAL HEADCOUNT BY STUDENT CATEGORY	21
FIGURE 27: ANNUAL CREDIT HOURS BY STUDENT CATEGORY.....	21
FIGURE 28: ANNUAL HEADCOUNT BY DEGREE TYPE.....	ERROR! BOOKMARK NOT DEFINED.
FIGURE 29: ANNUAL CREDIT HOURS BY DEGREE TYPE.....	22
FIGURE 30: ANNUAL HEADCOUNT BY TYPE OF COURSE	23
FIGURE 31: ANNUAL TOTAL CREDIT HOURS BY TYPE OF COURSE.....	23
FIGURE 32: ANNUAL HEADCOUNT FOR THE KLUTHE CENTER.....	24
FIGURE 33: ANNUAL HEADCOUNT FOR LLC EXTENSION CENTERS.....	24
FIGURE 34: ANNUAL CREDIT HOURS FOR THE KLUTHE CENTER	24
FIGURE 35: ANNUAL CREDIT HOURS FOR LLC EXTENSION CENTERS.....	24
FIGURE 36: PROGRAMS WITH INCREASING ENROLLMENT	25
FIGURE 37: PROGRAMS WITH DECREASING ENROLLMENT	26
FIGURE 38: ANNUAL PERCENTAGE OF STUDENTS BY GENDER AND STUDENT LOAD	27
FIGURE 39: ANNUAL AVERAGE AGE OF STUDENTS	27
FIGURE 40: PERCENT OF MINORITY STUDENTS COMPARED TO PERCENT OF MINORITY RESIDENTS IN THE DISTRICT	28
FIGURE 41: PERCENT OF STUDENTS ENROLLED IN ELIGIBLE PROGRAMS AND RECEIVING ANY TYPE OF AID	29
FIGURE 42: ANNUAL NUMBER OF STUDENTS RECEIVING FINANCIAL AID BY TYPE	29
FIGURE 43: AVERAGE TOTAL AMOUNT OF FINANCIAL AID RECEIVED PER STUDENT	30
FIGURE 44: COMPARISON OF AVERAGE ACT COMPOSITE SCORES.....	30
FIGURE 45: THREE YEAR RETENTION AND GRADUATION RATES FOR FIRST TIME FULL TIME DEGREE SEEKING STUDENTS	31
FIGURE 46: RETENTION FOR FIRST TIME FULL TIME DEGREE SEEKING STUDENT COHORTS	31
FIGURE 47: AVERAGE GPA OF LAKE LAND COLLEGE TRANSFER STUDENTS COMPARED TO ALL OTHER COMMUNITY COLLEGE TRANSFER AND NATIVE STUDENTS	32

FIGURE 48: LLC COMPARED TO NATIONAL AVERAGE: 2007-2009 WOULD ENROLL AGAIN, 2010 WOULD RECOMMEND COLLEGE	33
FIGURE 49: LLC COMPARED TO NATIONAL AVERAGE: SATISFIED WITH COLLEGE EXPERIENCE	33
FIGURE 50: LLC COMPARED TO NATIONAL AVERAGE: 2007-2009 COLLEGE EXPERIENCE BETTER THAN EXPECTED, 2010 ACADEMIC QUALITY OF COLLEGE	34
FIGURE 51: PERCENTAGE OF FIRST TIME DEGREE SEEKING STUDENTS TESTING INTO DEVELOPMENTAL COURSES	34
FIGURE 52: STUDENTS SUCCESSFULLY COMPLETE FIRST COLLEGE LEVEL COURSE AFTER FINAL DEVELOPMENTAL COURSE	35
FIGURE 53: TUITION AND FEES	36
FIGURE 54: COMPARISON OF TUITION AND FEES WITH ILLINOIS COMMUNITY COLLEGES	37
FIGURE 55: ANNUAL TUITION AND FEES FOR FULL TIME STUDENTS BY COLLEGE.....	38
FIGURE 56: AVERAGE NET INSTRUCTIONAL COSTS PER CREDIT HOUR	38
FIGURE 57: PERCENTAGE OF GENERAL FUND BY SOURCE	39
FIGURE 58: DOLLAR AMOUNT OF GENERAL FUND BY SOURCES.....	40
FIGURE 59: HISTORY OF EAV RATES BY TAX LEVY YEAR	41
FIGURE 60: ADDITIONS TO THE RESERVE FUND	41

Introduction

The Trend Analysis Report provides an overview of multiyear data encompassing Lake Land College and the district it serves. The data provided in this report provide facts to inform and support decision making for the College.

All annual data in this report (i.e., fiscal year or annual) consists of data from summer, fall, and spring terms in that order. For example, 2006 annual data and/or 2006 fiscal year data includes data from summer 2005, fall 2005, and spring 2006. Since the Illinois Community College Board (ICCB) uses summer, fall, and spring terms in that order to represent their fiscal year, using the same definition of annual or fiscal year data allows the College to compare these numbers to the same numbers for all community colleges in Illinois that are produced by ICCB.

The report provides data related to areas integral to the future and success of Lake Land College. These areas are presented in the following four sections:

1. Section A: District Demographics,
2. Section B: Enrollment,
3. Section C: Student Demographics and Information, and
4. Section D: Tuition, Fees and Other Financial Data.

Section A: District Demographics provides a summary of Lake Land College's district demographics. Lake Land's district encompasses parts or all of the following counties: Effingham, Cumberland, Coles, Clark, Moultrie, Shelby, Fayette, Edgar, Clay, Christian, Montgomery, and Macon. Changes over time regarding the district's population, median income, education attainment, unemployment, and employment by industry are presented via geospatial maps encompassing the counties listed above with an outline of the actual district Lake Land College serves. For median income and education attainment, state and national averages are provided on the maps for comparisons.

Section B: Enrollment summarizes annual headcount, FTE and credit hours for Lake Land College students. Unless noted in the graphs, all headcount, FTE, and credit hours presented in this section exclude DOC students. Career students are defined as students seeking an AAS, ALS, or CRT degree. Transfer students are defined as students seeking an AA, AES, or AS degree. Annual headcount, FTE, and credit hours are based on end of term numbers unless otherwise stated. In addition, headcount numbers reflect unduplicated students with one exception. The Annual Headcount by Type of Course graph reflects duplicated students, since students can take an online, evening, and/or a weekend course. The final graphs in this section summarize enrollment in the top ten programs experiencing increasing or decreasing enrollment numbers.

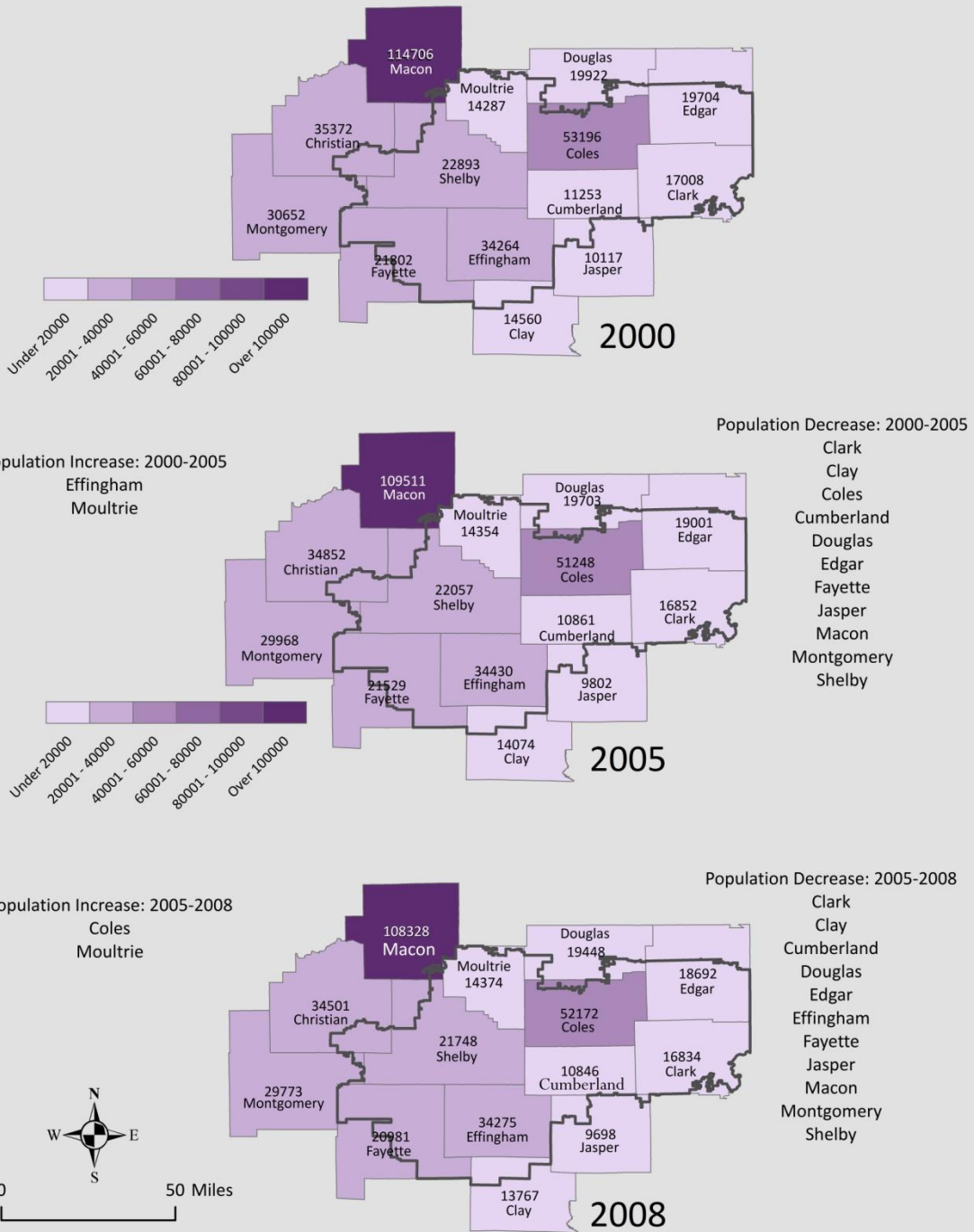
Section C: Student Demographics and Information presents data related to gender, age, race/ethnicity, financial aid, average ACT Scores, success rates, graduation rates, retention, GPA of Lake Land transfer students in their transfer university or college, student satisfaction, and assessment related to developmental courses. The headcount and percentages of students in most of the graphs reflect unduplicated students. However, the Number of Students Receiving Financial Aid and the Percentage of Students Testing into Developmental Courses reflect duplicated students, since students can receive more than one type of financial aid and assess into more than one developmental course area (e.g., math, English, and/or reading). The percentage of students receiving financial aid may be under reported because the numbers presented in this report reflect only the financial aid which the college administers. These numbers exclude students receiving scholarships directly from the funding organization because the College is

unaware of these scholarships. All three satisfaction measures presented in this report are pulled from the Noel Levitz Satisfaction Survey that Lake Land College administers to its students.

Section D: Tuition, Fees, and Other Financial Data summarizes the history of Lake Land College's tuition and fees, as well as, funding by source, net instructional costs, and EAV rates. In addition, several of the graphs provide a comparison of Lake Land College's tuition and fees with all other community colleges in Illinois.

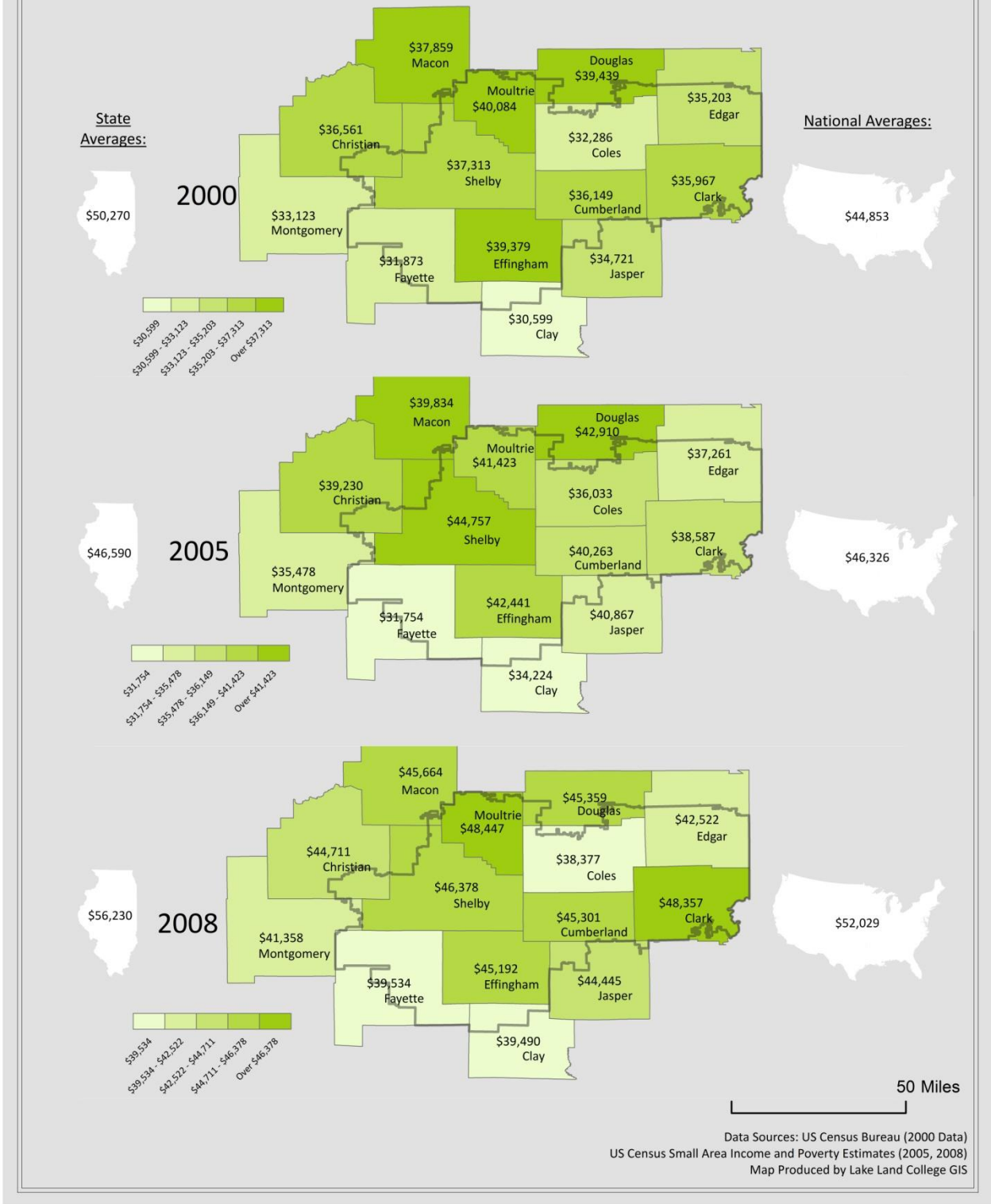
While reviewing the figures in the document, please keep several things in mind. First, students can enroll through fall and spring terms. As a result, annual and end of term data may look quite different from ten day data, which is the data that the Illinois Community College Board (ICCB) presents in most of their reports. Second, several figures do not present fiscal year 2011 data. In these cases, final 2011 data is not available at this time.

Population Change: 2000, 2005, 2008

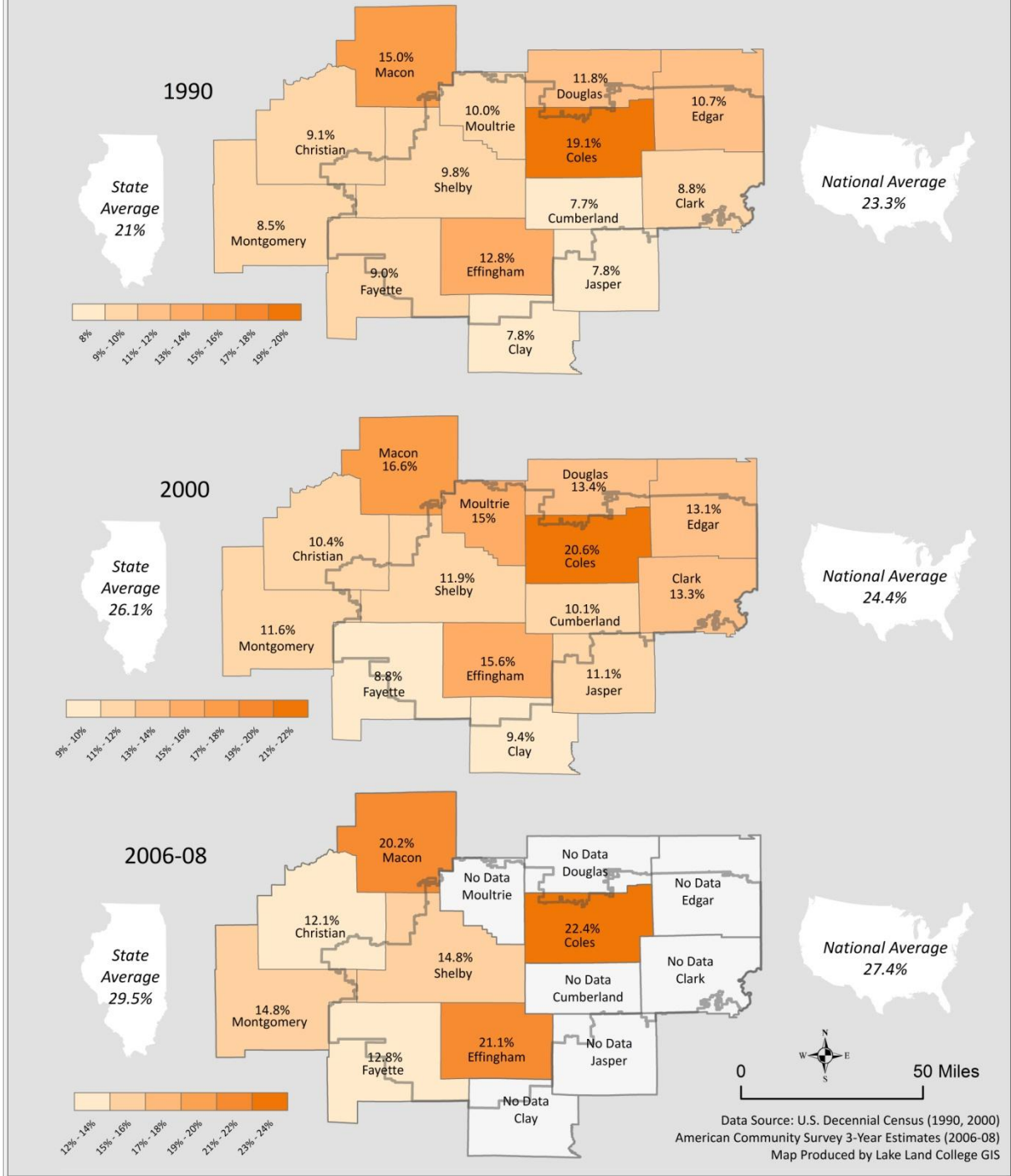


Data Source: Population Division, US Census Bureau
 Annual County Resident Population Estimates
 Map Produced by Lake Land College GIS

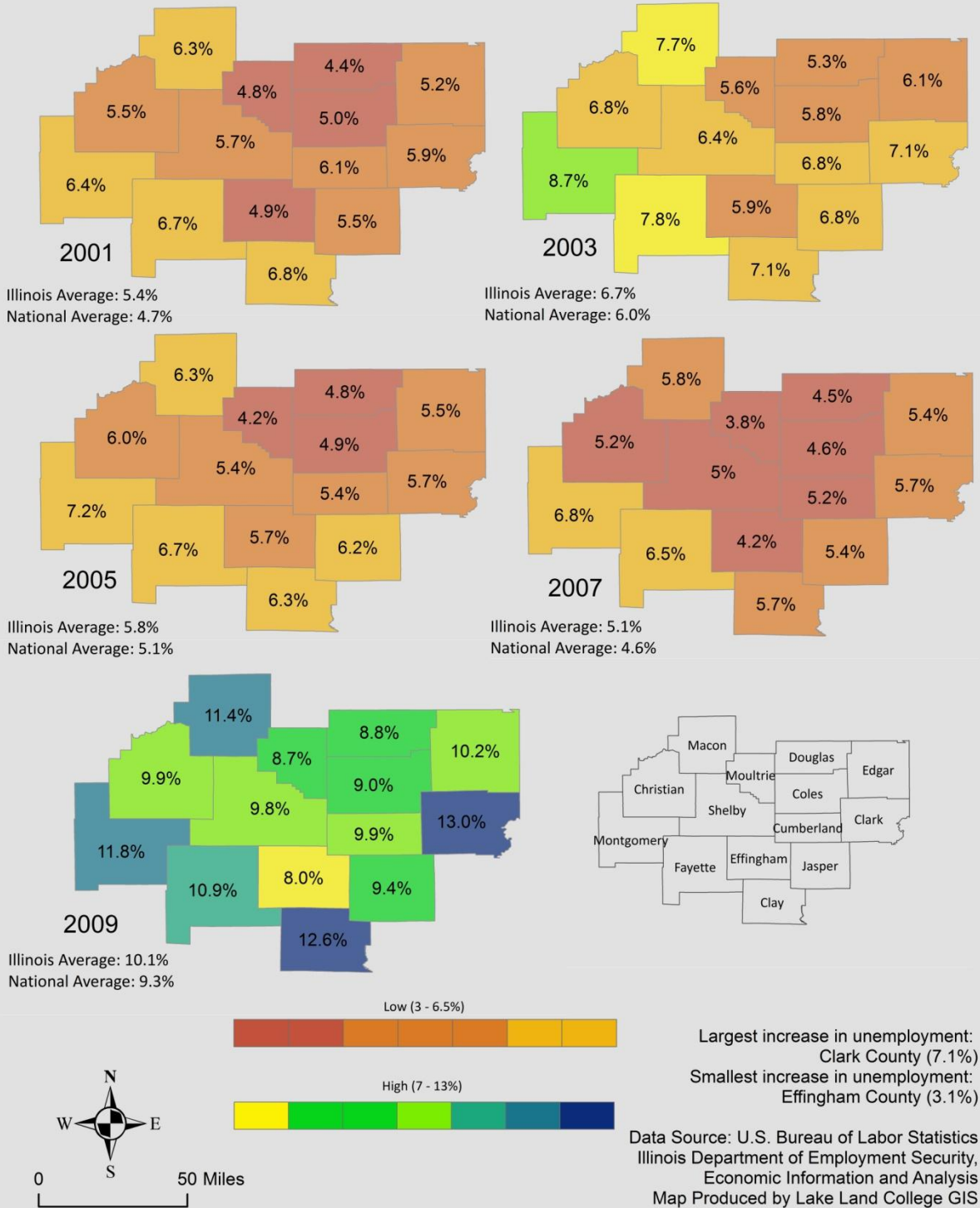
Median Household Income: 2000, 2005, 2008



Educational Attainment of Counties Within Lake Land College District Represented as a Percentage of the Population 25 Years and Over Bachelor's Degree or Higher



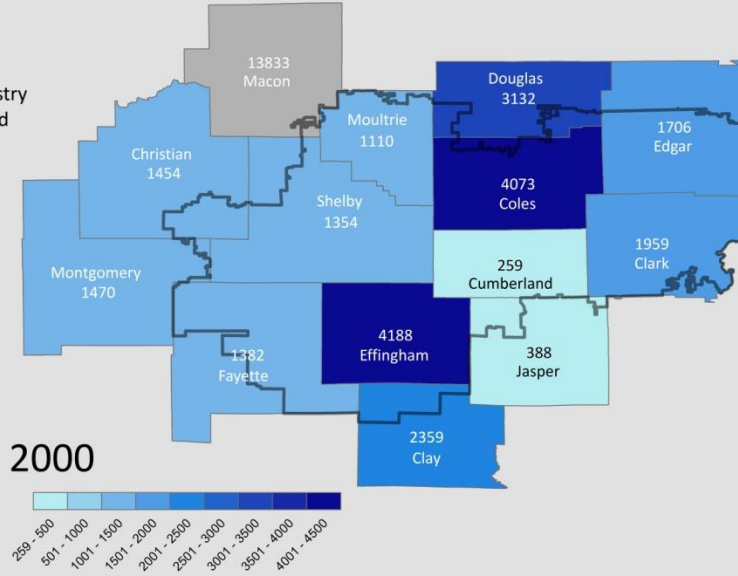
Unemployment Rates: 2001-2009



Area Employment by Industry: Manufacturing

**Ranking of 2000 Industry
By Total # Employed**

1. Macon
2. Effingham
3. Coles
4. Douglas
5. Clay
6. Clark
7. Edgar
8. Montgomery
9. Christian
10. Fayette
11. Shelby
12. Moultrie
13. Jasper
14. Cumberland

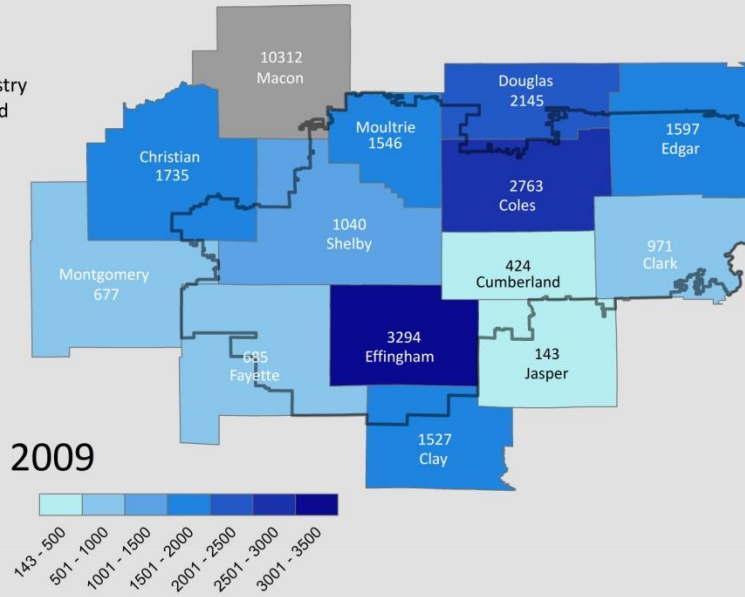


**Ranking of 2000 Industry
By % Employed**

1. Clay (41%)
2. Douglas (40%)
3. Clark (38%)
4. Edgar (29%)
5. Moultrie (27%)
6. Macon (24%)
7. Shelby (24%)
8. Fayette (21%)
9. Effingham (20%)
10. Coles (15%)
11. Jasper (14%)
12. Montgomery (13%)
13. Christian (13%)
14. Cumberland (13%)

**Ranking of 2009 Industry
By Total # Employed**

1. Macon
2. Effingham
3. Coles
4. Douglas
5. Christian
6. Edgar
7. Moultrie
8. Clay
9. Shelby
10. Clark
11. Fayette
12. Montgomery
13. Cumberland
14. Jasper



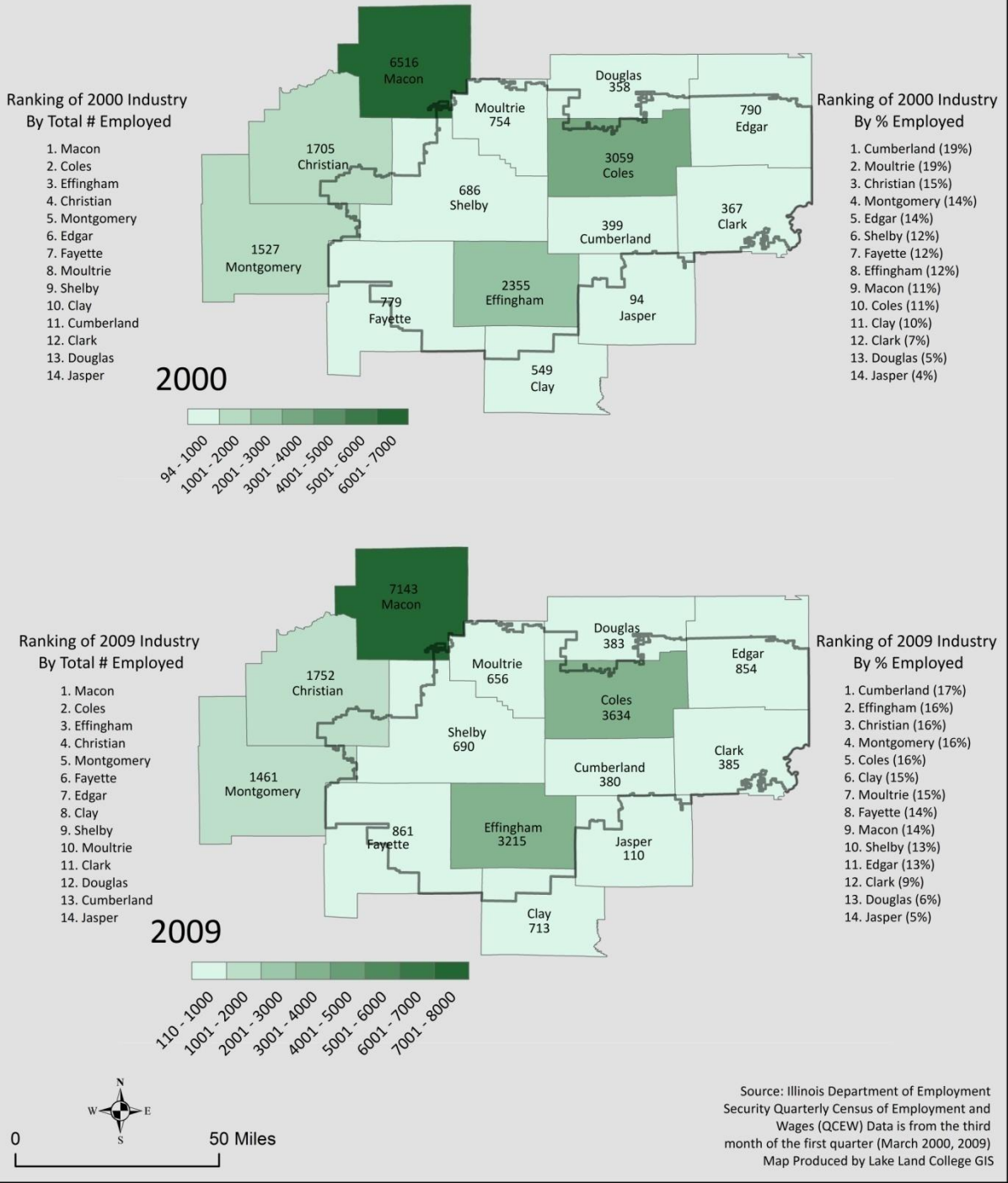
**Ranking of 2009 Industry
By % Employed**

1. Moultrie (36%)
2. Douglas (34%)
3. Clay (31%)
4. Clark (26%)
5. Edgar (25%)
6. Shelby (22%)
7. Macon (22%)
8. Cumberland (20%)
9. Effingham (18%)
10. Christian (17%)
11. Coles (13%)
12. Fayette (11%)
13. Montgomery (8%)
14. Jasper (7%)



Source: Illinois Department of Employment Security
Quarterly Census of Employment and Wages (QCEW)
Data is from the third month of the first quarter (March 2000, 2009)
Map Produced by Lake Land College GIS

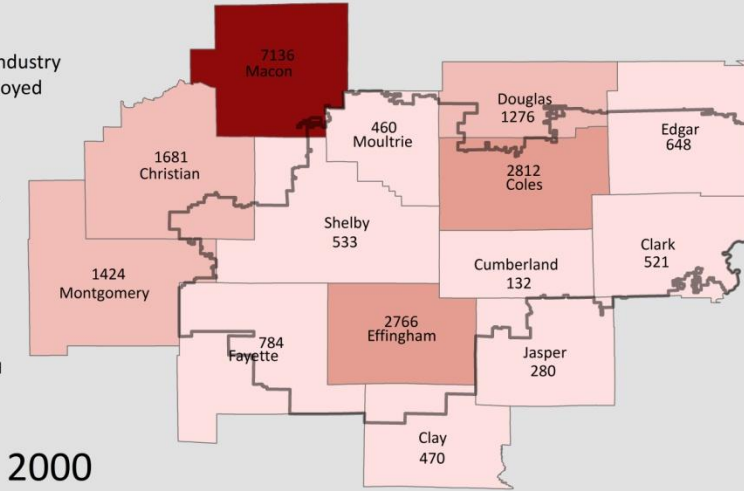
Area Employment by Industry: Health Care and Social Assistance



Area Employment by Industry: Retail Trade

Ranking of 2000 Industry By Total # Employed

1. Macon
2. Coles
3. Effingham
4. Christian
5. Montgomery
6. Douglas
7. Fayette
8. Edgar
9. Shelby
10. Clark
11. Clay
12. Moultrie
13. Cumberland
14. Jasper



Ranking of 2000 Industry By % Employed

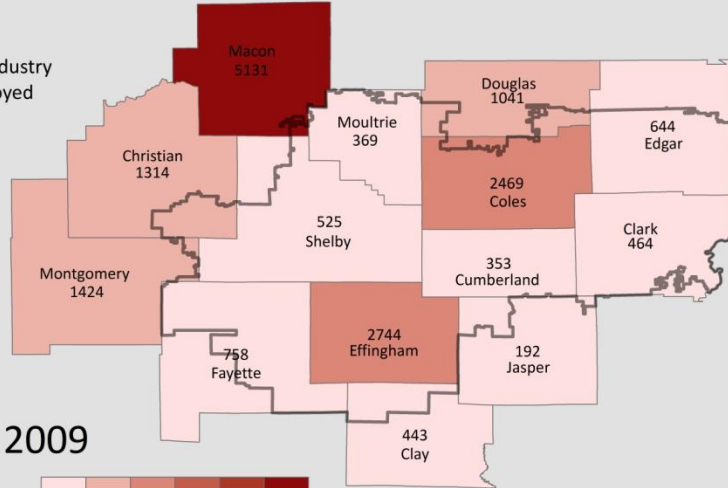
1. Cumberland (20%)
2. Douglas (16%)
3. Christian (15%)
4. Effingham (14%)
5. Montgomery (13%)
6. Macon (12%)
7. Fayette (12%)
8. Moultrie (11%)
9. Edgar (11%)
10. Jasper (10%)
11. Coles (10%)
12. Clark (10%)
13. Shelby (9%)
14. Clay (8%)

2000



Ranking of 2009 Industry By Total # Employed

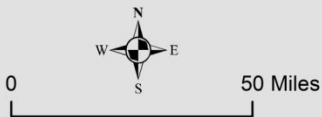
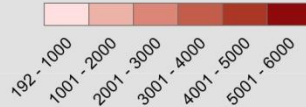
1. Macon
2. Effingham
3. Coles
4. Montgomery
5. Christian
6. Douglas
7. Fayette
8. Edgar
9. Shelby
10. Clark
11. Clay
12. Moultrie
13. Cumberland
14. Jasper



Ranking of 2009 Industry By % Employed

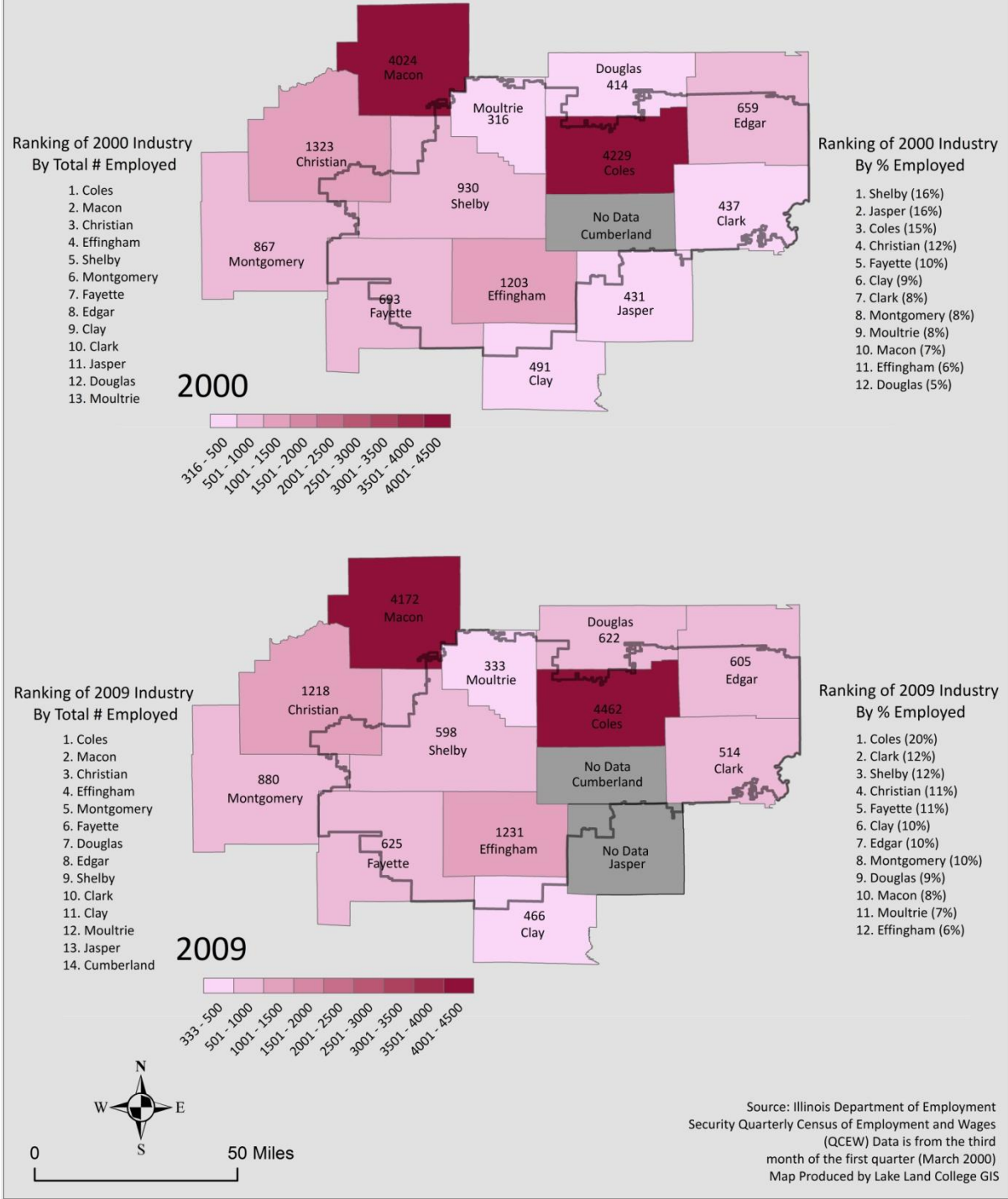
1. Cumberland (16%)
2. Montgomery (15%)
3. Douglas (15%)
4. Effingham (14%)
5. Fayette (13%)
6. Christian (12%)
7. Clark (11%)
8. Coles (11%)
9. Shelby (11%)
10. Macon (10%)
11. Edgar (10%)
12. Clay (9%)
13. Jasper (9%)
14. Moultrie (8%)

2009



Source: Illinois Department of Employment Security
 Quarterly Census of Employment and Wages (QCEW)
 Data is from the third month of the first quarter (March 2000, 2009)
 Map Produced by Lake Land College GIS

Area Employment by Industry: Educational Services

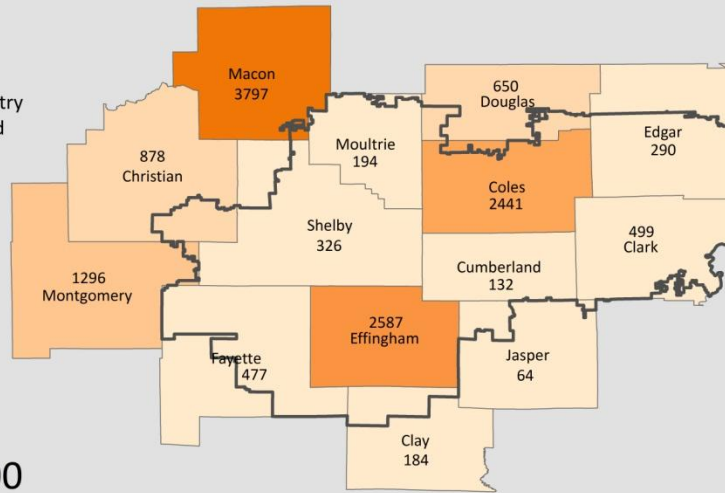


Area Employment by Industry: Accommodation and Food Services

Ranking of 2000 Industry By Total # Employed

1. Macon
2. Effingham
3. Coles
4. Montgomery
5. Christian
6. Douglas
7. Clark
8. Fayette
9. Shelby
10. Edgar
11. Moultrie
12. Clay
13. Cumberland
14. Jasper

2000



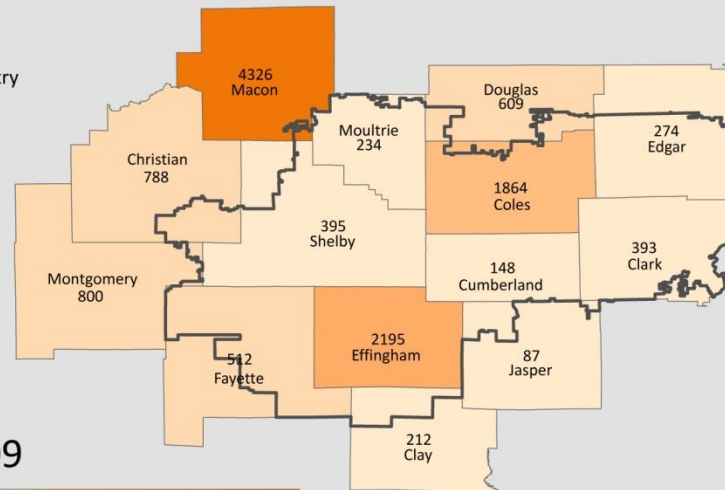
Ranking of 2000 Industry By % Employed

1. Effingham (13%)
2. Montgomery (12%)
3. Clark (10%)
4. Coles (9%)
5. Douglas (8%)
6. Christian (8%)
7. Fayette (7%)
8. Macon (7%)
9. Cumberland (6%)
10. Shelby (6%)
11. Edgar (5%)
12. Moultrie (5%)
13. Clay (3%)
14. Jasper (2%)

Ranking of 2009 Industry By Total # Employed

1. Macon
2. Effingham
3. Coles
4. Montgomery
5. Christian
6. Douglas
7. Fayette
8. Shelby
9. Clark
10. Edgar
11. Moultrie
12. Clay
13. Cumberland
14. Jasper

2009



Ranking of 2009 Industry By % Employed

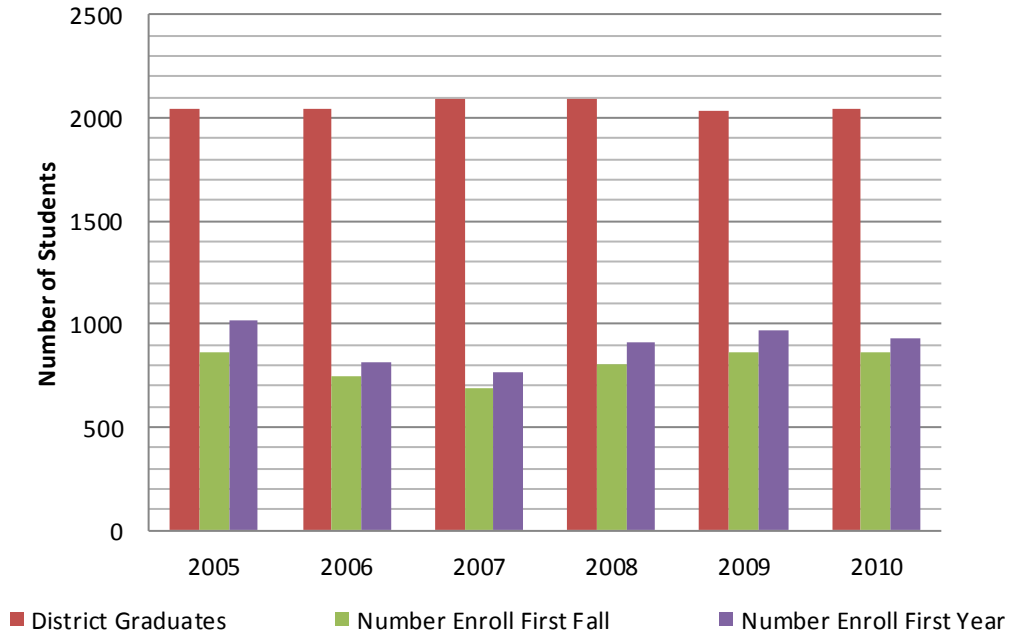
1. Effingham (11%)
2. Clark (9%)
3. Douglas (9%)
4. Montgomery (9%)
5. Macon (9%)
6. Fayette (9%)
7. Coles (8%)
8. Shelby (8%)
9. Christian (7%)
10. Cumberland (7%)
11. Moultrie (5%)
12. Clay (4%)
13. Edgar (4%)
14. Jasper (4%)



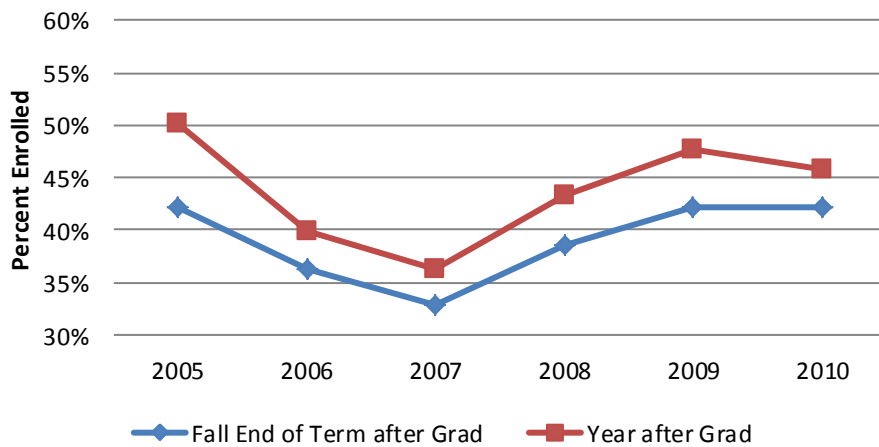
Source: Illinois Department of Employment Security
Quarterly Census of Employment and Wages (QCEW)
Data is from the third month of the first quarter (March 2000, 2009)
Map Produced by Lake Land College GIS

Section B: Enrollment

Number of District High School Graduates and Enrollees after Graduation

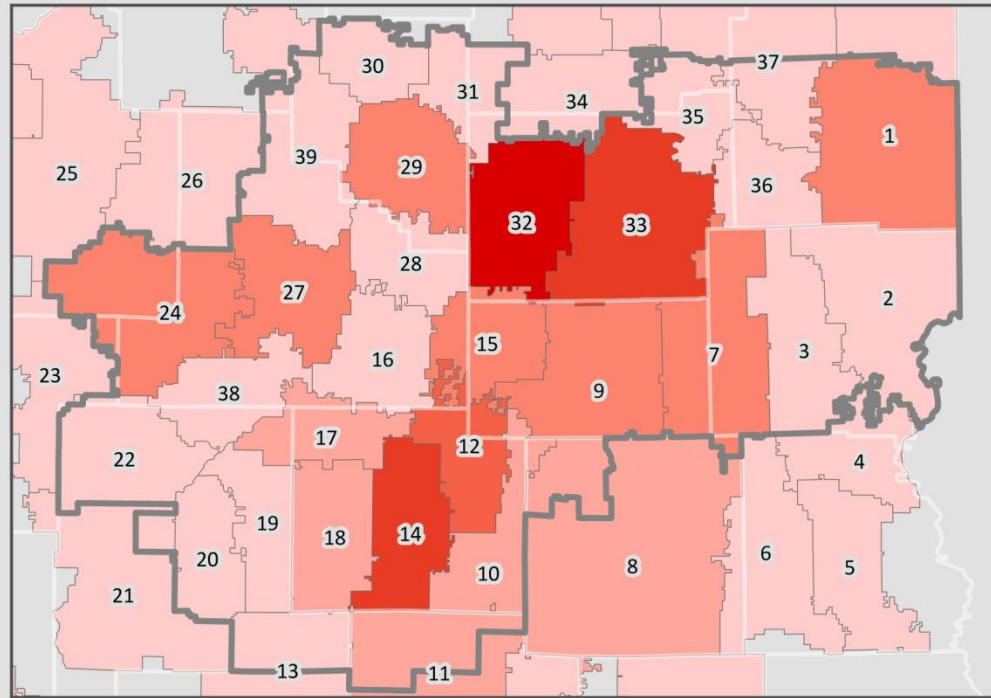
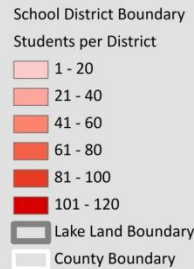
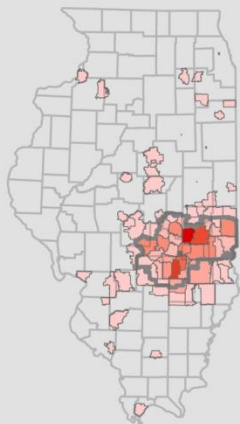


Percent of District High School Graduates Enrolled in Following Fall and Year after Graduation



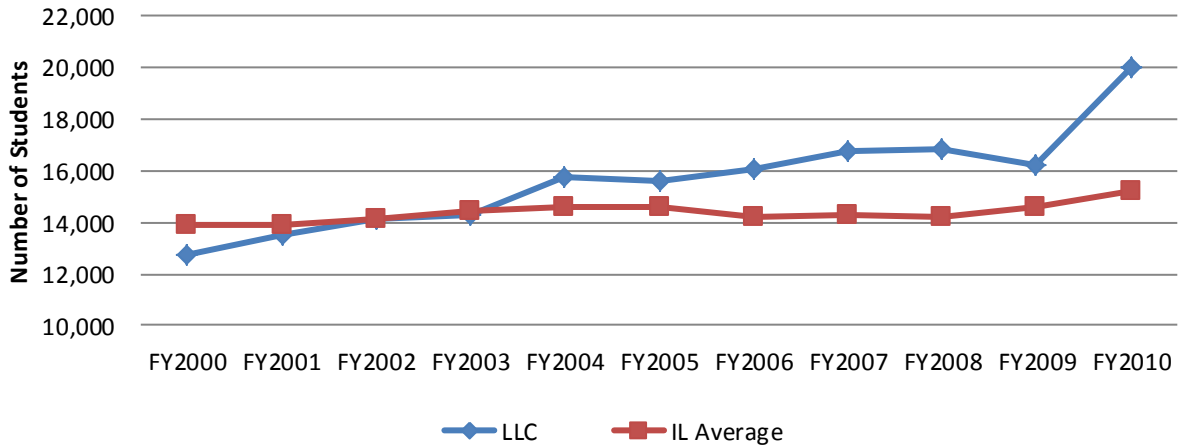
* Numbers reflect end of term data.

Lake Land College Enrollment within One Year of High School Graduation FY 2009: Shown by School District of Origin



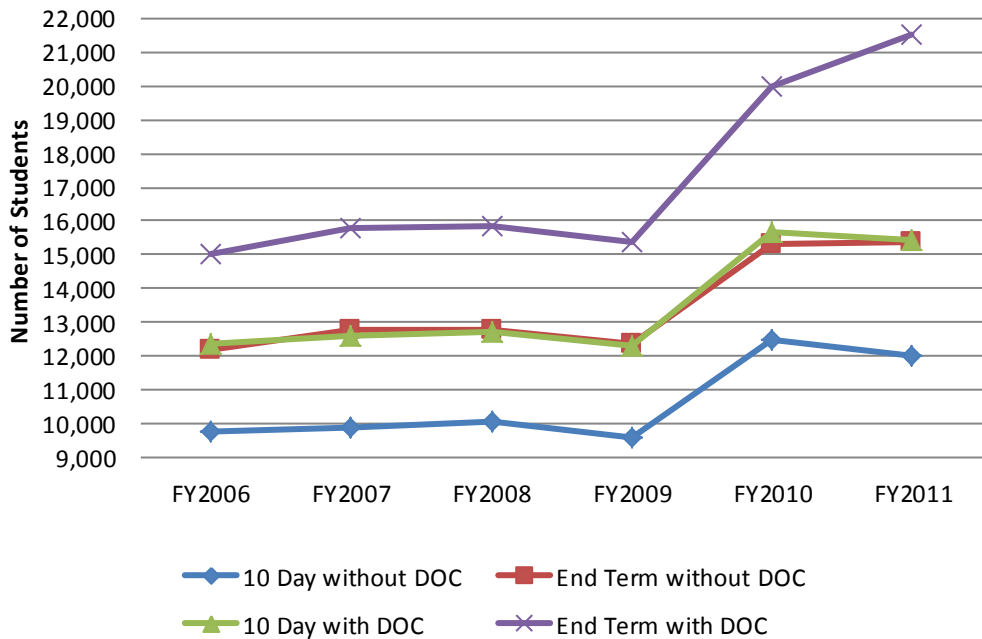
- | | | |
|---|--|--|
| <ol style="list-style-type: none"> 1. PARIS-UNION/CRESTWOOD SCHOOL DISTRICT 95 2. MARSHALL COMMUNITY UNIT SCHOOL DISTRICT 2C 3. MARTINSVILLE COMMUNITY UNIT SCHOOL DISTRICT 3C 4. HUTSONVILLE COMMUNITY UNIT SCHOOL DISTRICT 1 5. ROBINSON COMMUNITY UNIT SCHOOL DISTRICT 2 6. OBLONG COMMUNITY UNIT SCHOOL DISTRICT 4 7. CASEY-WESTFIELD COMMUNITY UNIT SCHOOL DISTRICT 4C 8. JASPER COUNTY COMMUNITY UNIT SCHOOL DISTRICT 1 9. CUMBERLAND COMMUNITY UNIT SCHOOL DISTRICT 77 10. DIETERICH COMMUNITY UNIT SCHOOL DISTRICT 30 11. NORTH CLAY COMMUNITY UNIT SCHOOL DISTRICT 25 12. TEUTOPOLIS COMMUNITY UNIT SCHOOL DISTRICT 50 13. SOUTH CENTRAL COMMUNITY UNIT SCHOOL DISTRICT 401 | <ol style="list-style-type: none"> 14. EFFINGHAM COMMUNITY UNIT SCHOOL DISTRICT 40 15. NEOGA COMMUNITY UNIT SCHOOL DISTRICT 3 16. STEWARDSON-STRASBURG COMMUNITY UNIT DISTRICT 5A 17. BEECHER CITY COMMUNITY UNIT SCHOOL DISTRICT 20 18. ALTAMONT COMMUNITY UNIT SCHOOL DISTRICT 10 19. ST ELMO COMMUNITY UNIT SCHOOL DISTRICT 202 20. BROWNSTOWN COMMUNITY UNIT SCHOOL DISTRICT 201 21. VANDALIA COMMUNITY UNIT SCHOOL DISTRICT 203 22. RAMSEY COMMUNITY UNIT SCHOOL DISTRICT 204 23. NOKOMIS COMMUNITY UNIT SCHOOL DISTRICT 22 24. PANA COMMUNITY UNIT SCHOOL DISTRICT 8 25. TAYLORVILLE COMMUNITY UNIT SCHOOL DISTRICT 3 26. CENTRAL A & M COMMUNITY UNIT SCHOOL DISTRICT 21 | <ol style="list-style-type: none"> 27. SHELBYVILLE COMMUNITY UNIT SCHOOL DISTRICT 4 28. WINDSOR COMMUNITY UNIT SCHOOL DISTRICT 1 29. SULLIVAN COMMUNITY UNIT SCHOOL DISTRICT 300 30. LOVINGTON COMMUNITY UNIT SCHOOL DISTRICT 303 31. ARTHUR COMMUNITY UNIT SCHOOL DISTRICT 305 32. MATTOON COMMUNITY UNIT SCHOOL DISTRICT 2 33. CHARLESTON COMMUNITY UNIT SCHOOL DISTRICT 1 34. ARCOLA CONSOLIDATED UNIT SCHOOL DISTRICT 306 35. OAKLAND COMMUNITY UNIT SCHOOL DISTRICT 5 36. KANSAS COMMUNITY UNIT SCHOOL DISTRICT 3 37. SHILOH COMMUNITY UNIT SCHOOL DISTRICT 1 38. COWDEN-HERRICK COMMUNITY UNIT SCHOOL DISTRICT 3A 39. OKAW VALLEY COMMUNITY SCHOOL DISTRICT 302 |
|---|--|--|

Annual Headcount Compared to Average Headcount of All Illinois Community Colleges

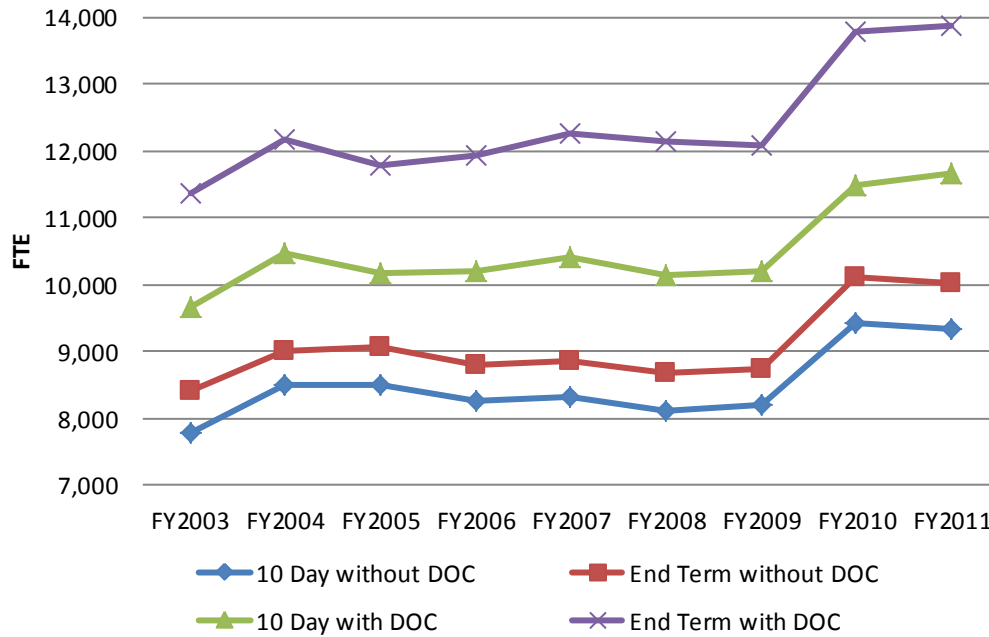


*Data includes DOC students and is based on 10th day data.
 **Average Heads for All IL colleges is total number enrolled divided by 48.

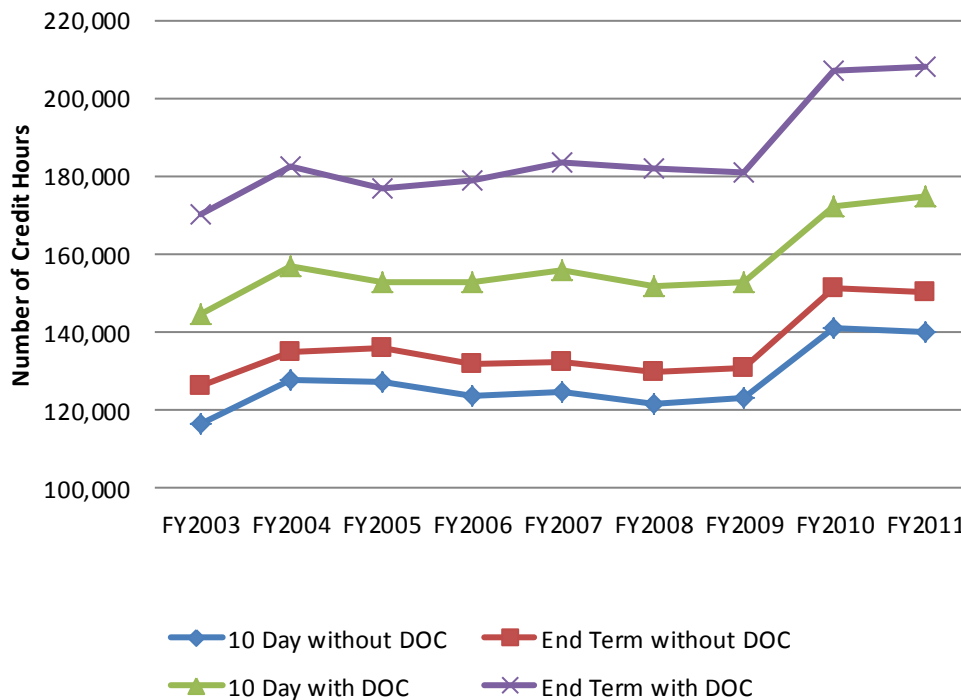
Annual Headcount

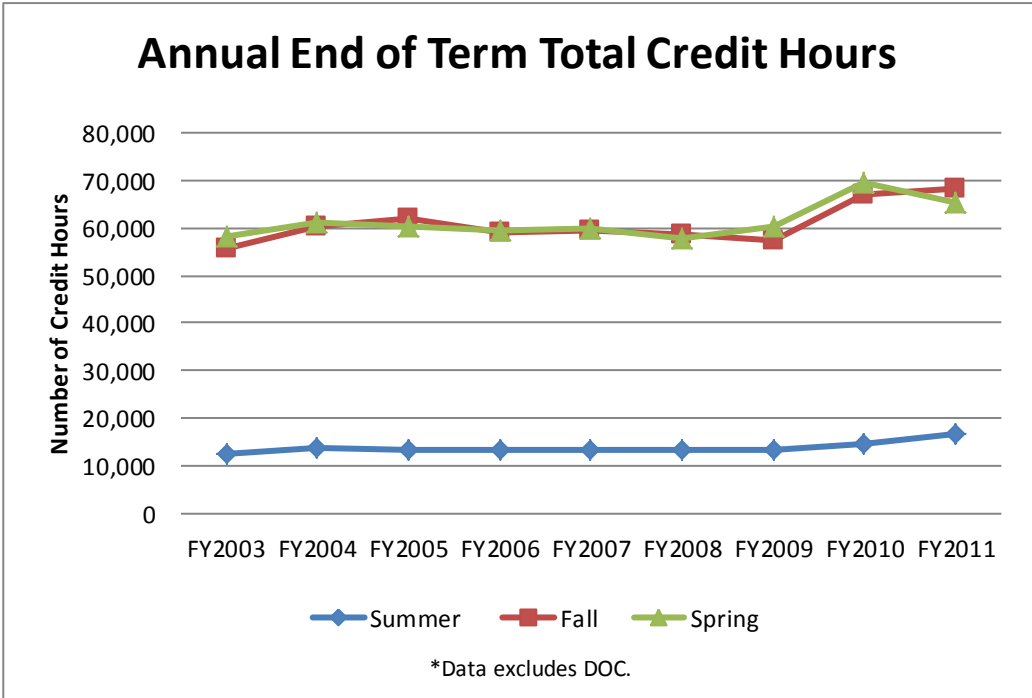
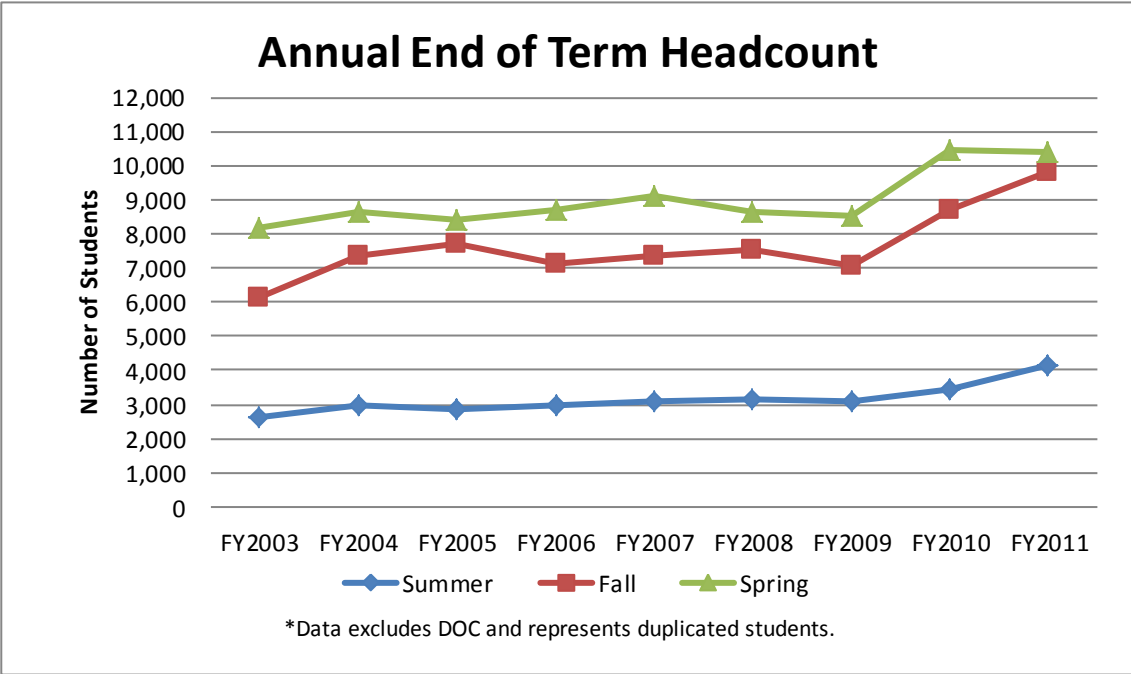


Annual Student FTE: 10th Day and End of Term Comparison

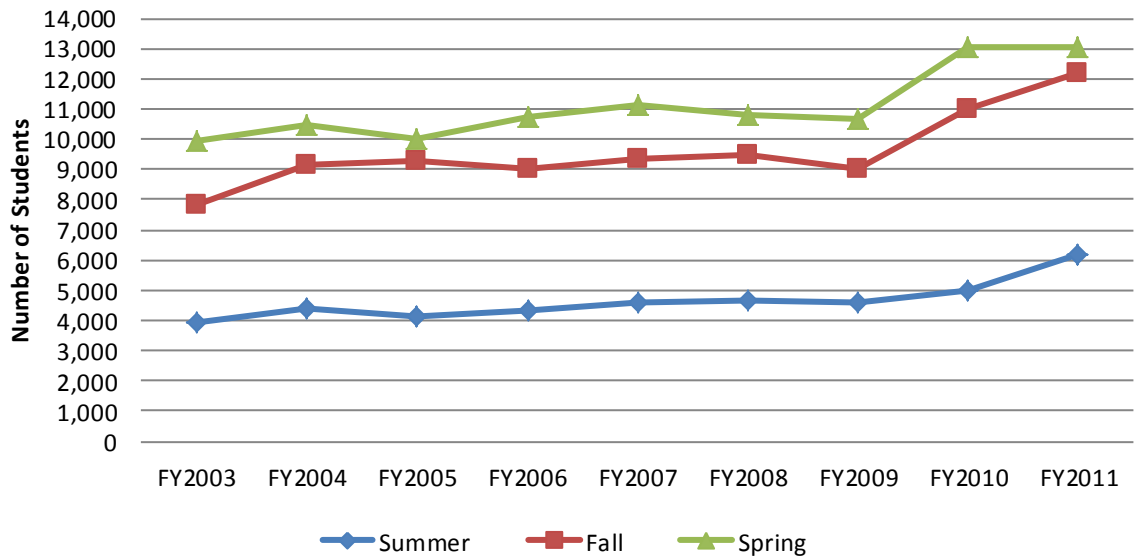


Total Annual Credit Hours



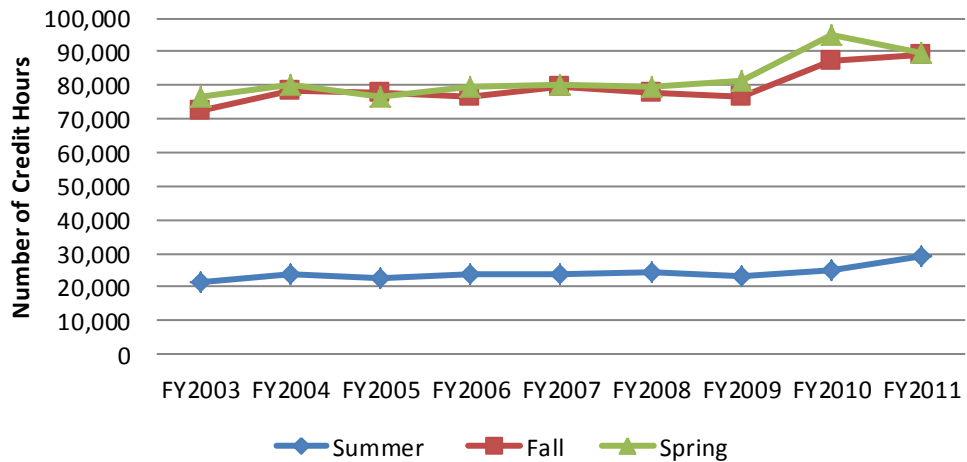


Annual End of Term Headcount



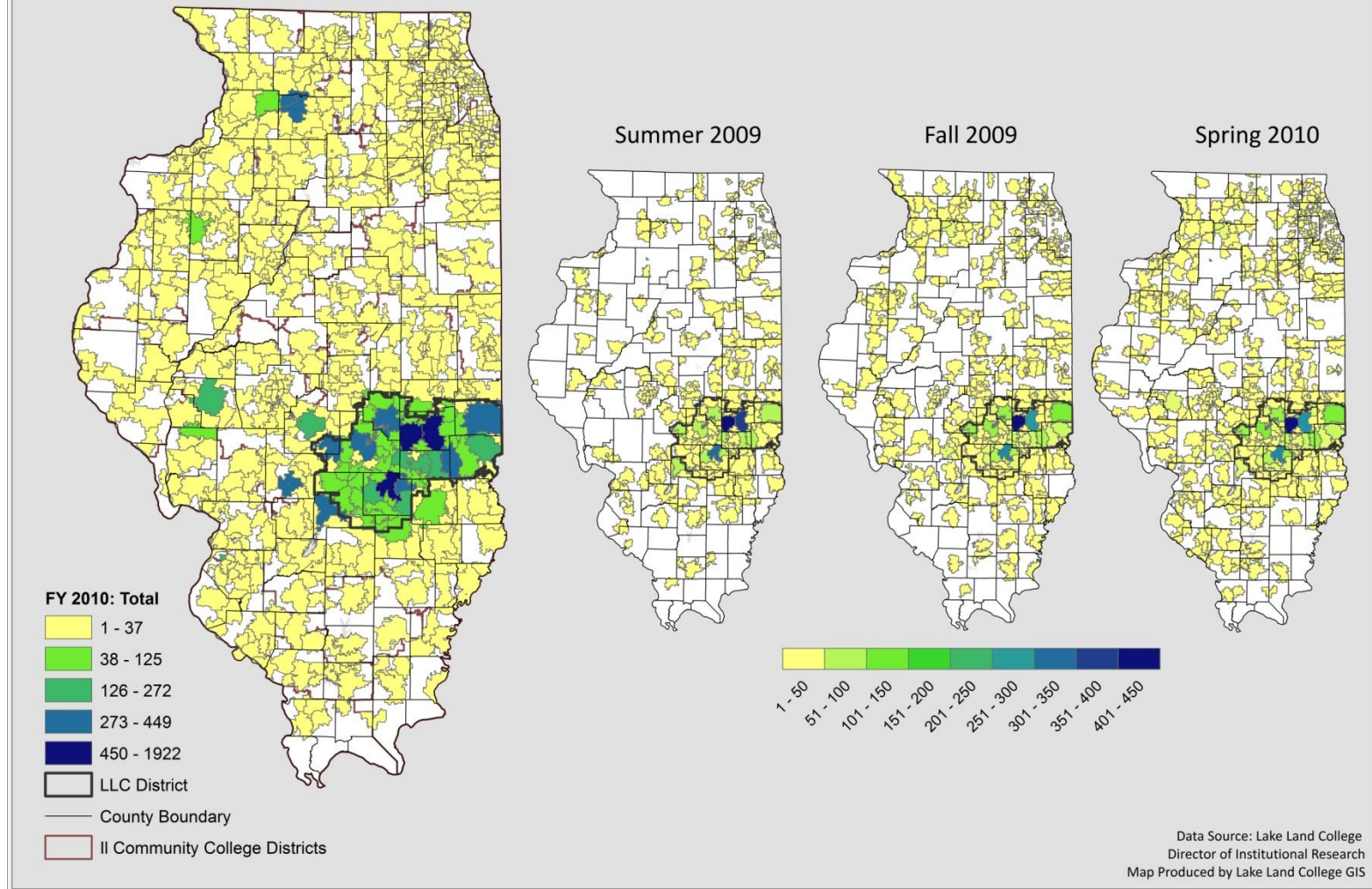
*Data includes DOC students and represents duplicated students.

Annual End of Term Total Credit Hours

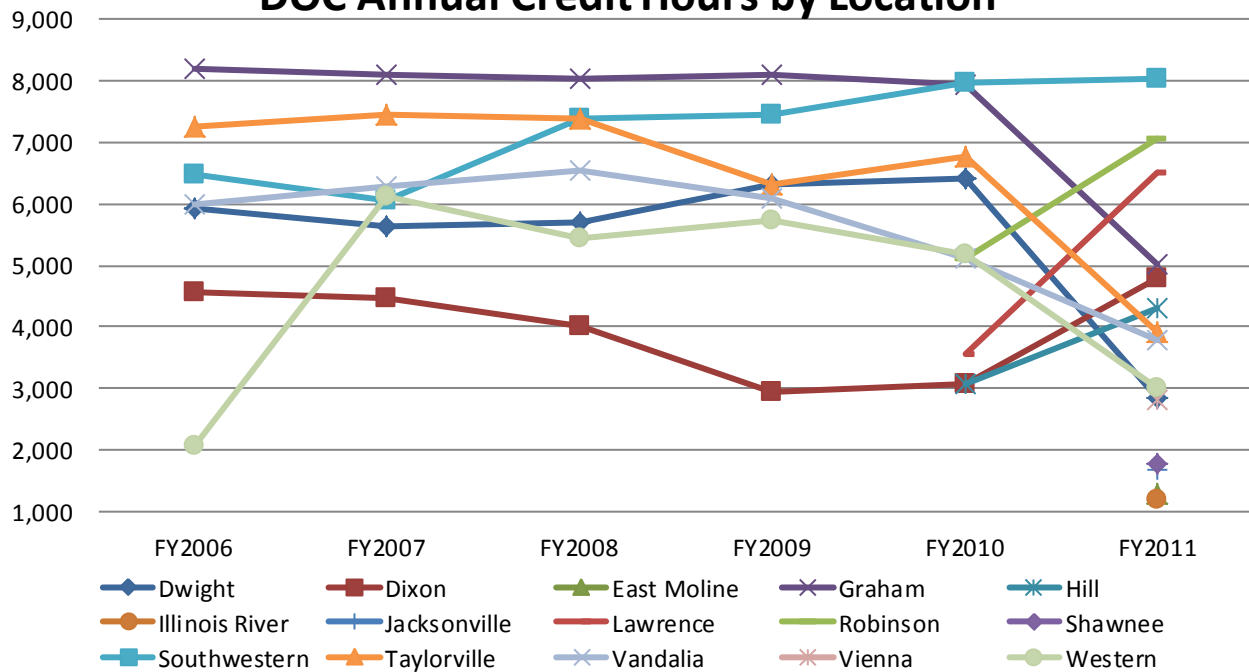


*Data includes DOC students.

*Fiscal Year 2010 Enrollment: All Illinois Students (In-District and Out-of-District)
Excludes DOC Enrollment, Shown by Head Count per Semester within Zip Code Boundaries*

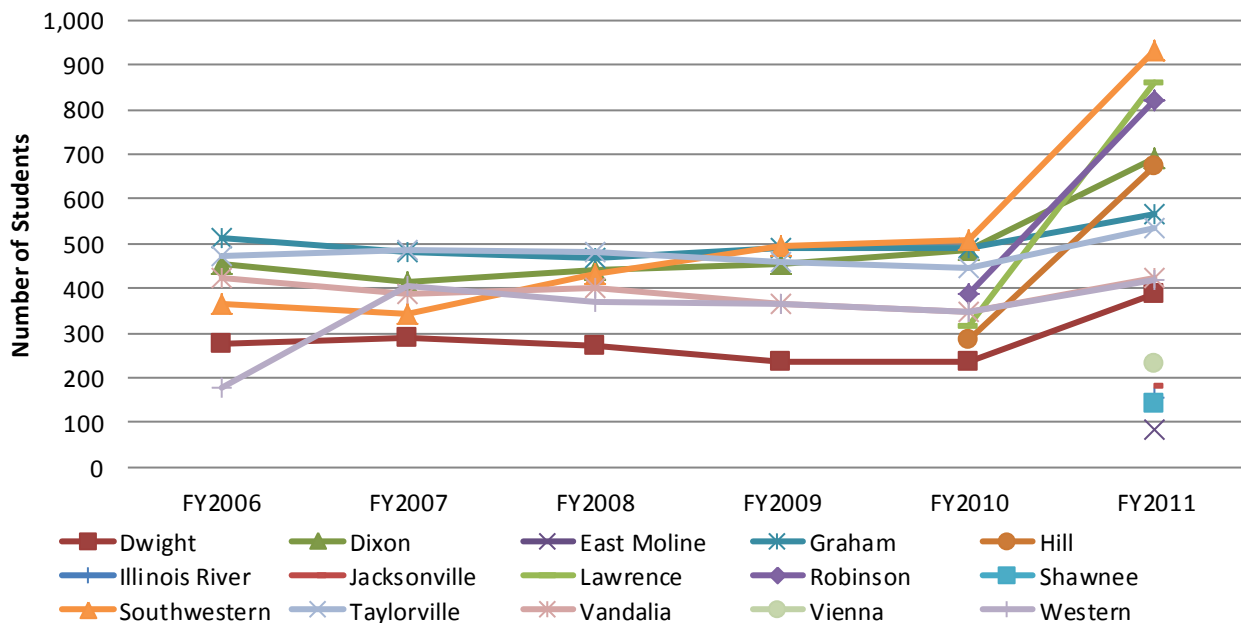


DOC Annual Credit Hours by Location



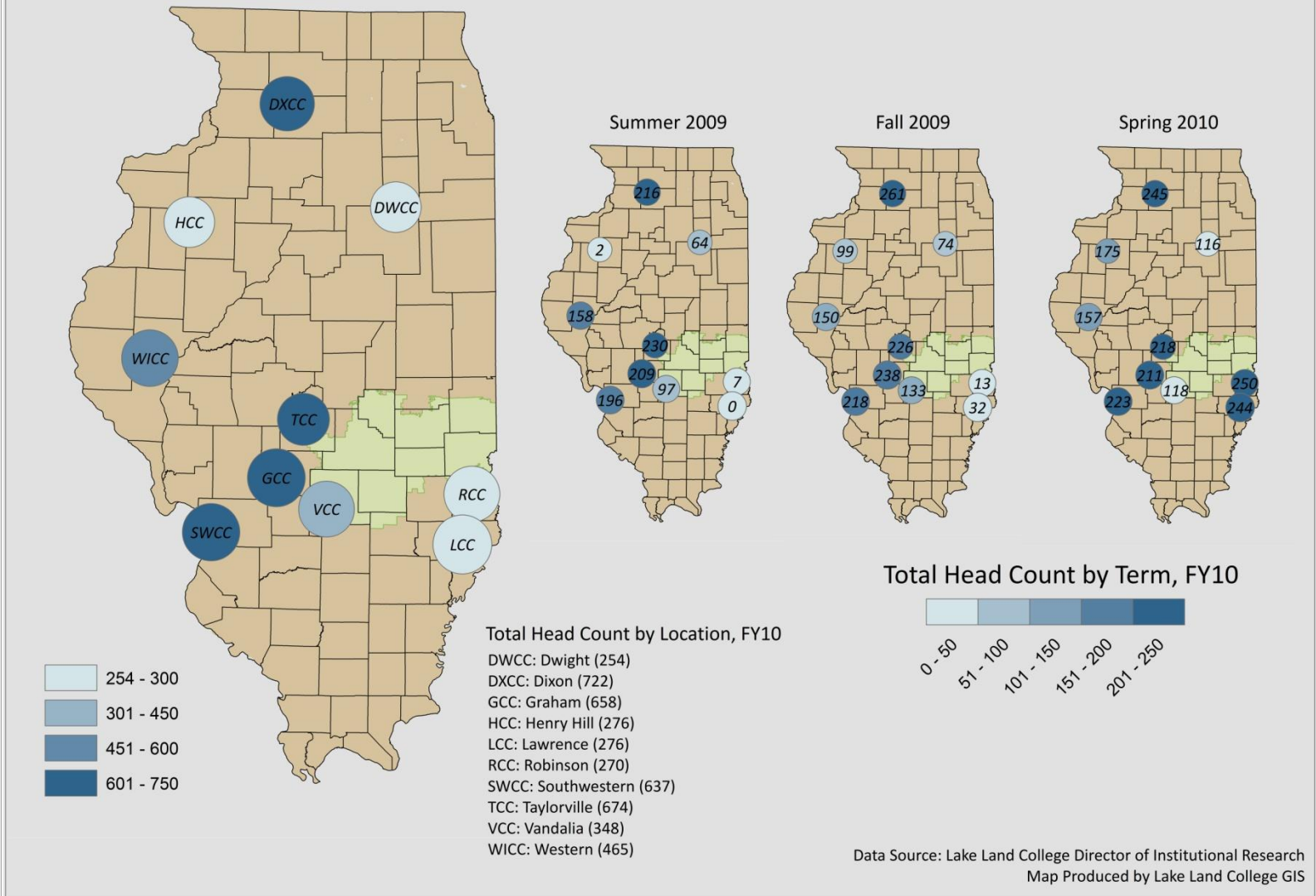
LLC began services at Henry Hill, Lawrence, & Robinson in FY2010 and East Moline, Illinois River, Jacksonville, Shawnee, and Vienna in FY2011 .

DOC Annual Headcount

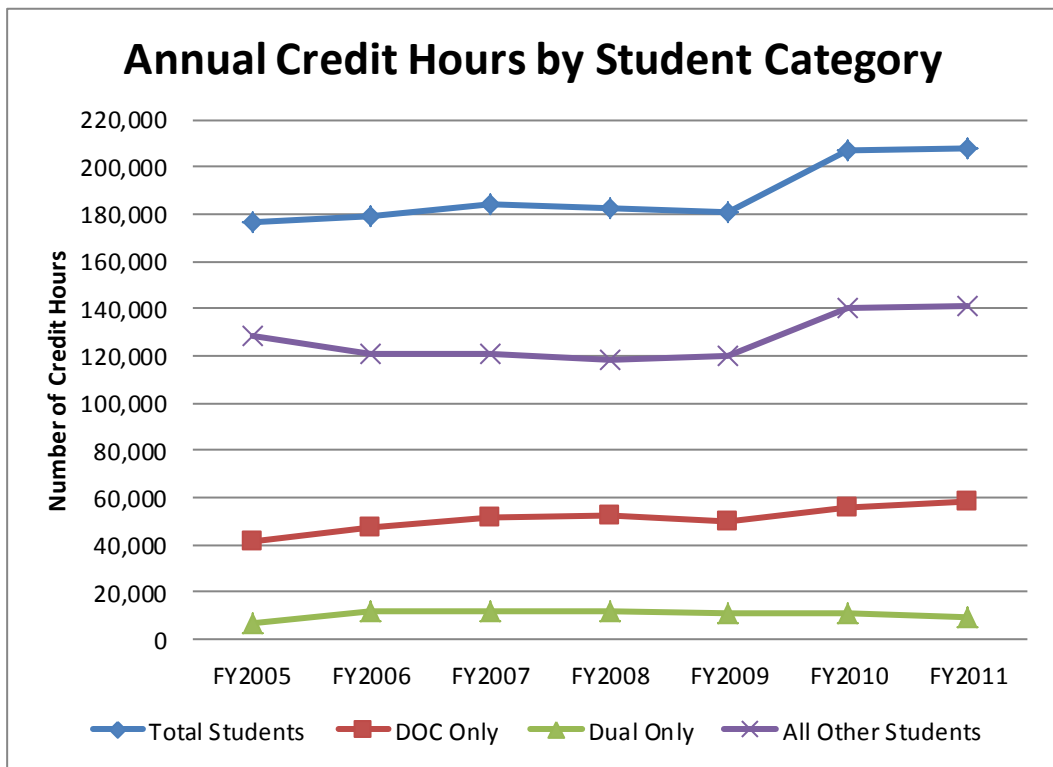
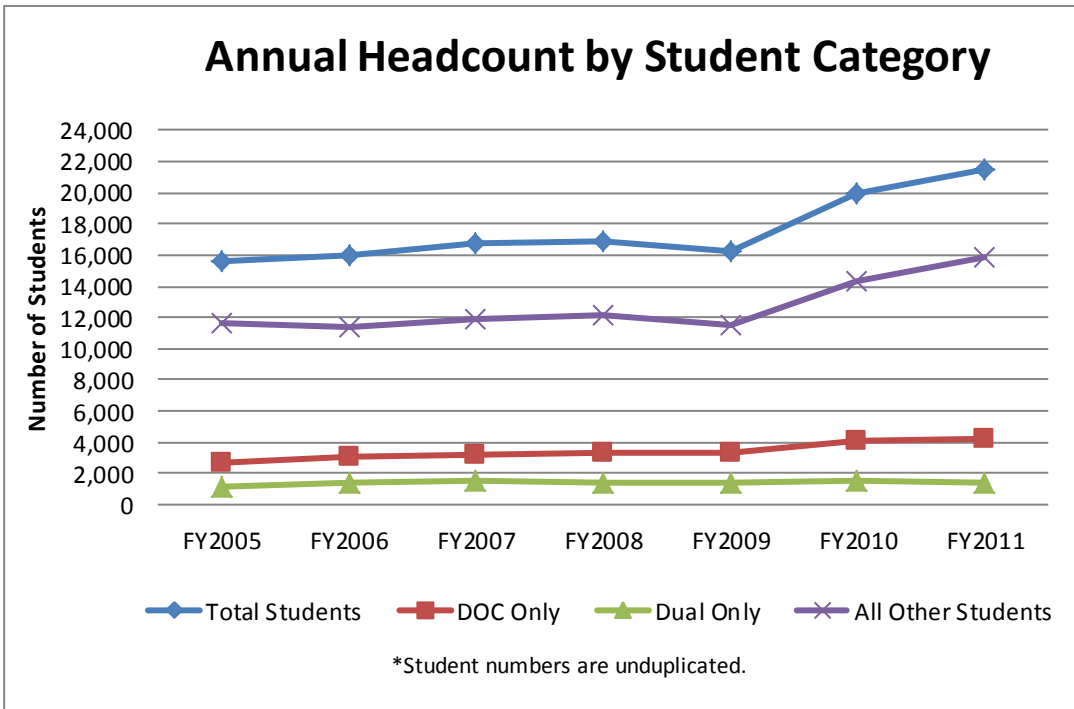


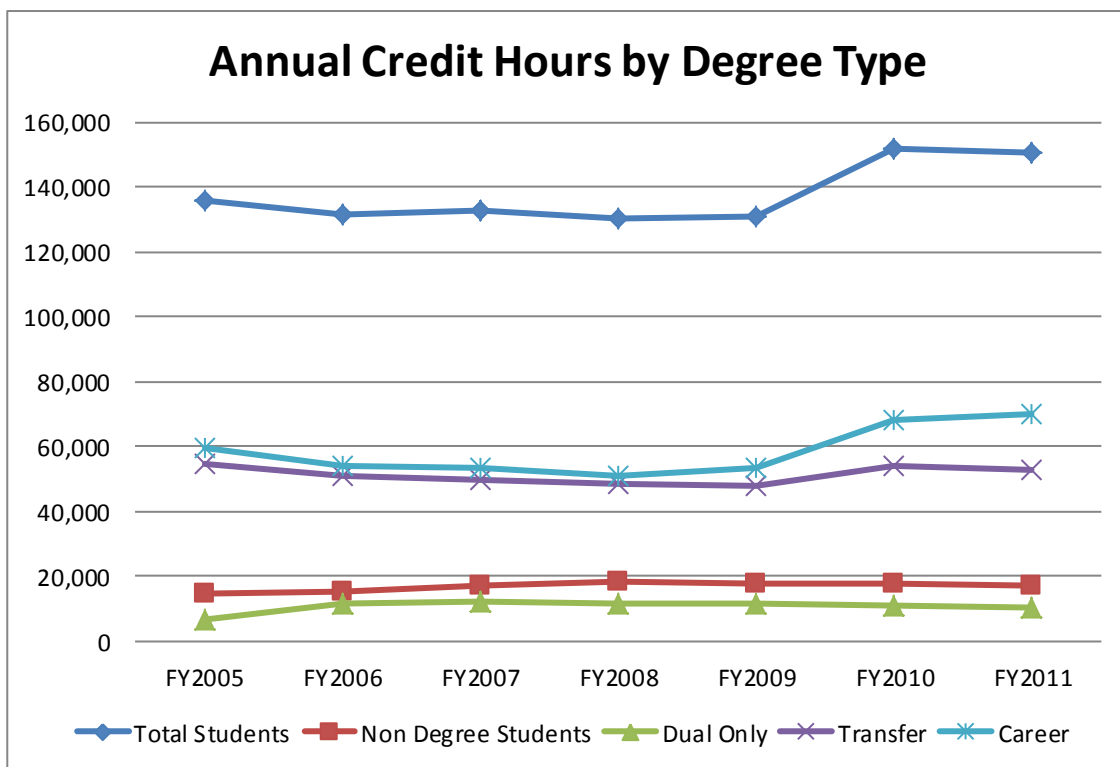
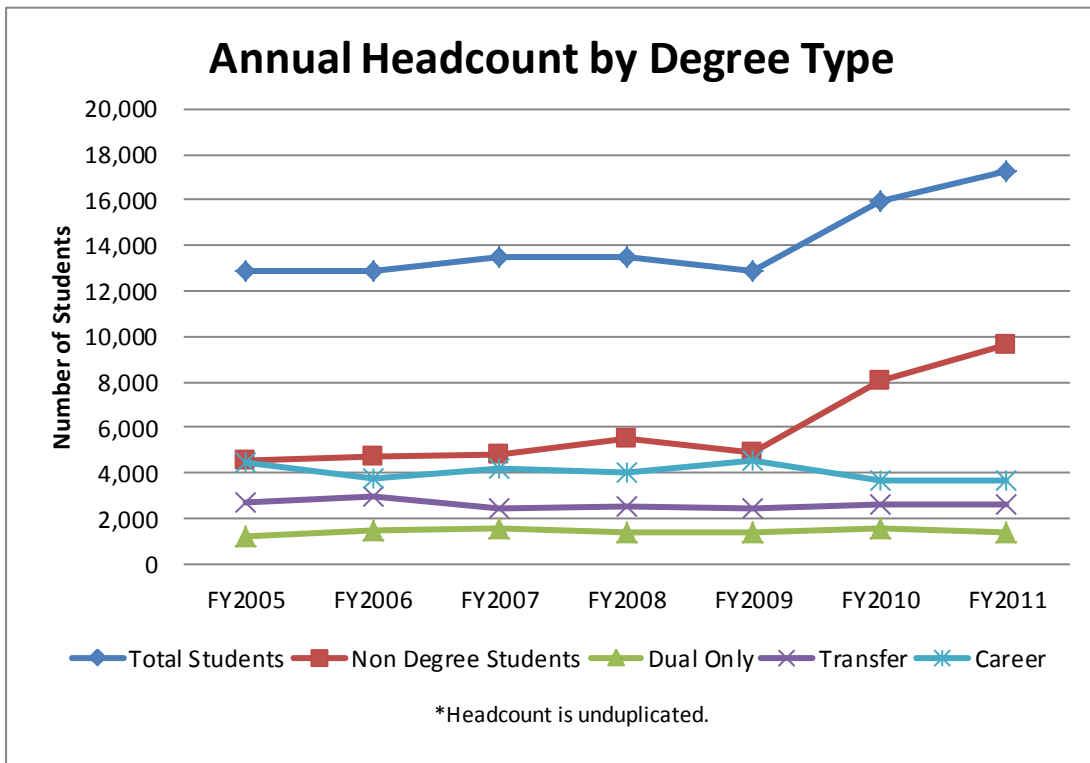
LLC began to serve Henry Hill, Lawrence, and Robinson locations FY2010 and East Moline, Illinois River, Jacksonville, Shawnee, and Vienna in FY2011 .

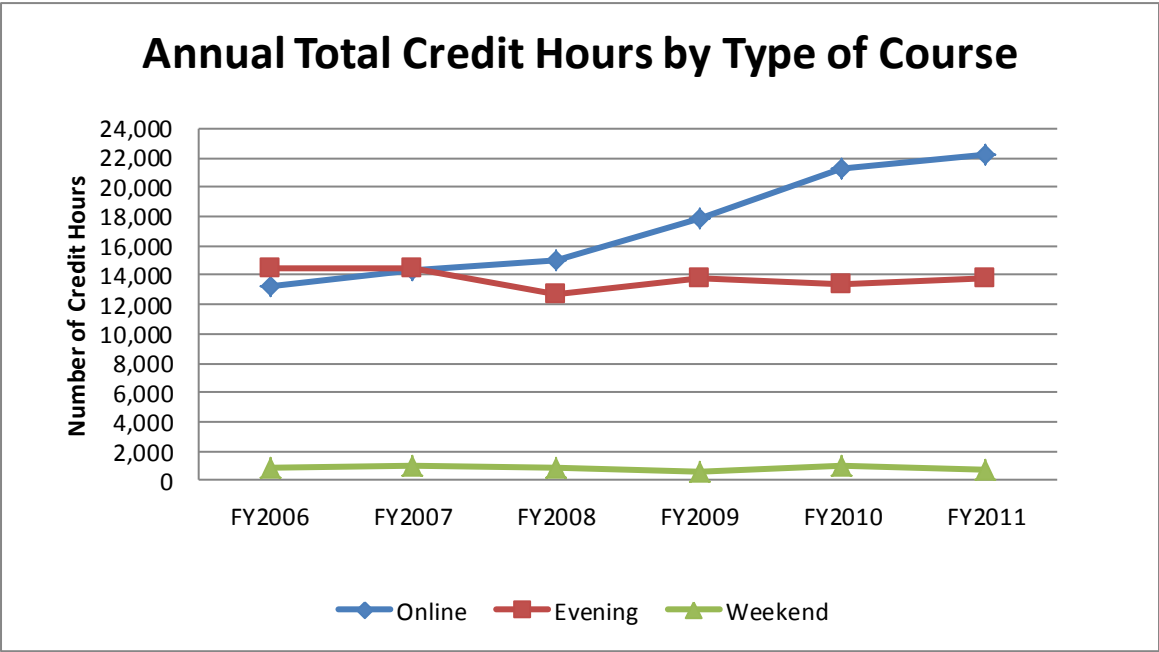
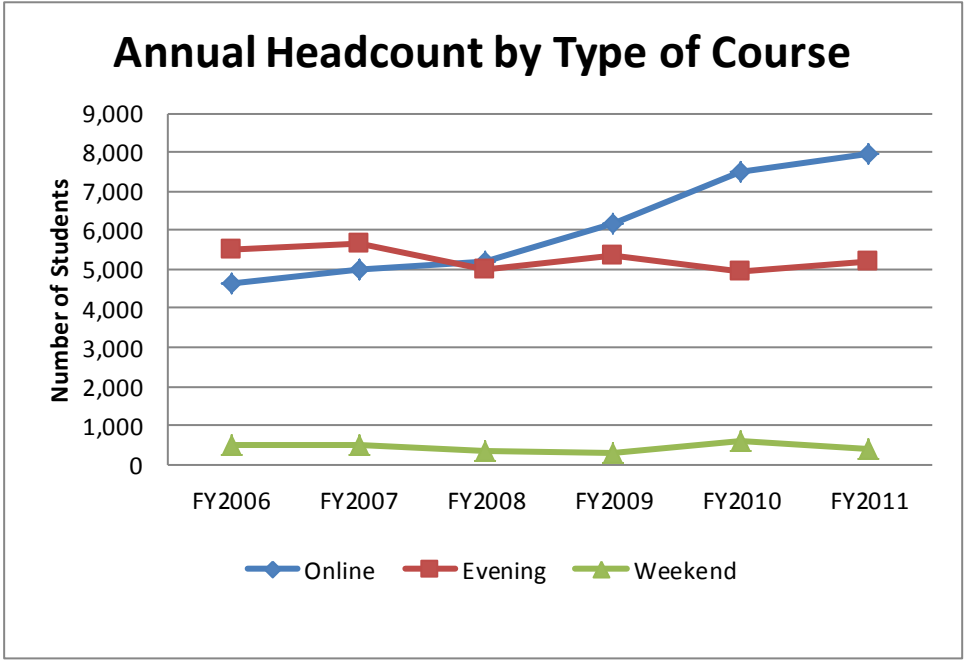
Fiscal Year 2010 Enrollment: Illinois Department of Corrections Shown by Head Count



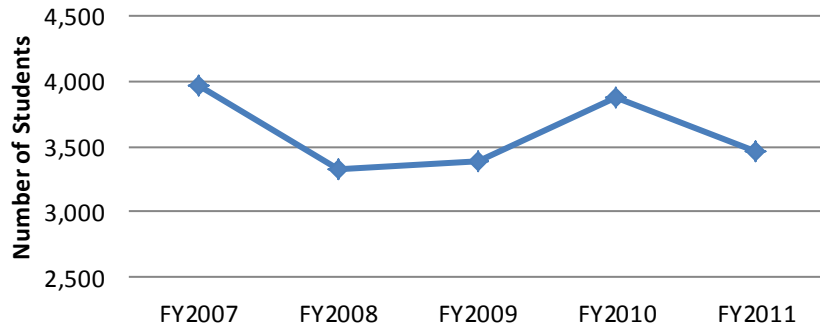
Data Source: Lake Land College Director of Institutional Research
Map Produced by Lake Land College GIS



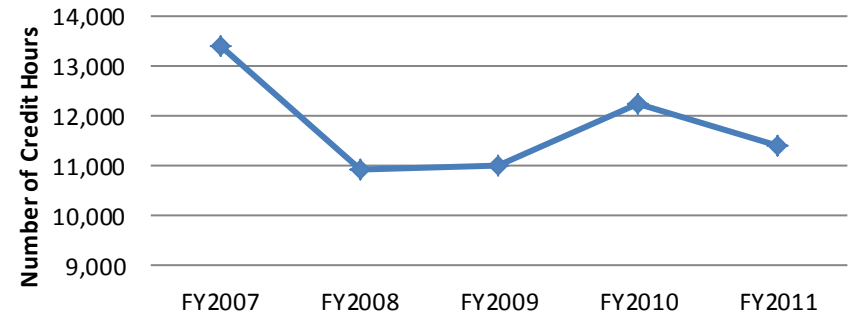




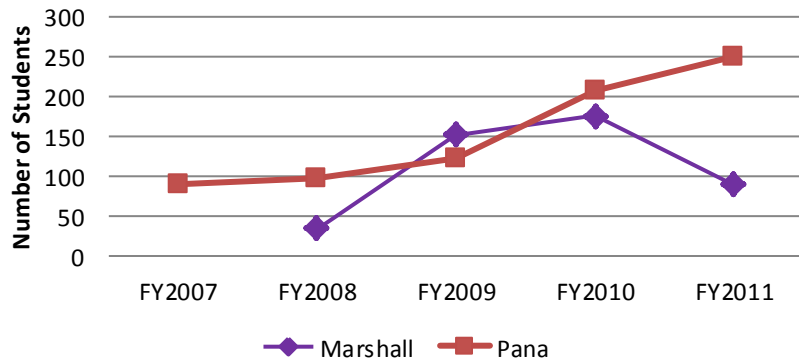
Annual Headcount for the Kluthe Center



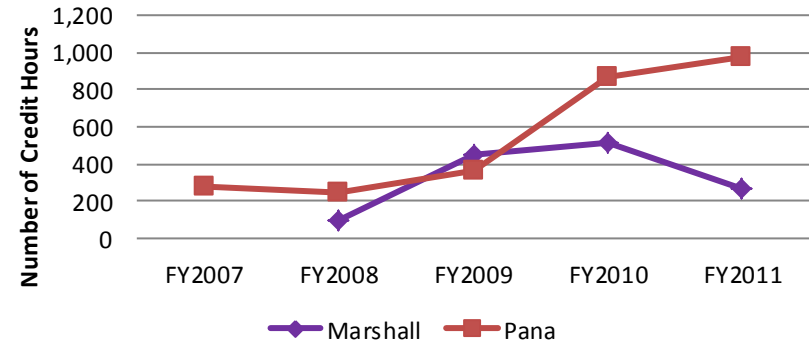
Annual Credit Hours for the Kluthe Center



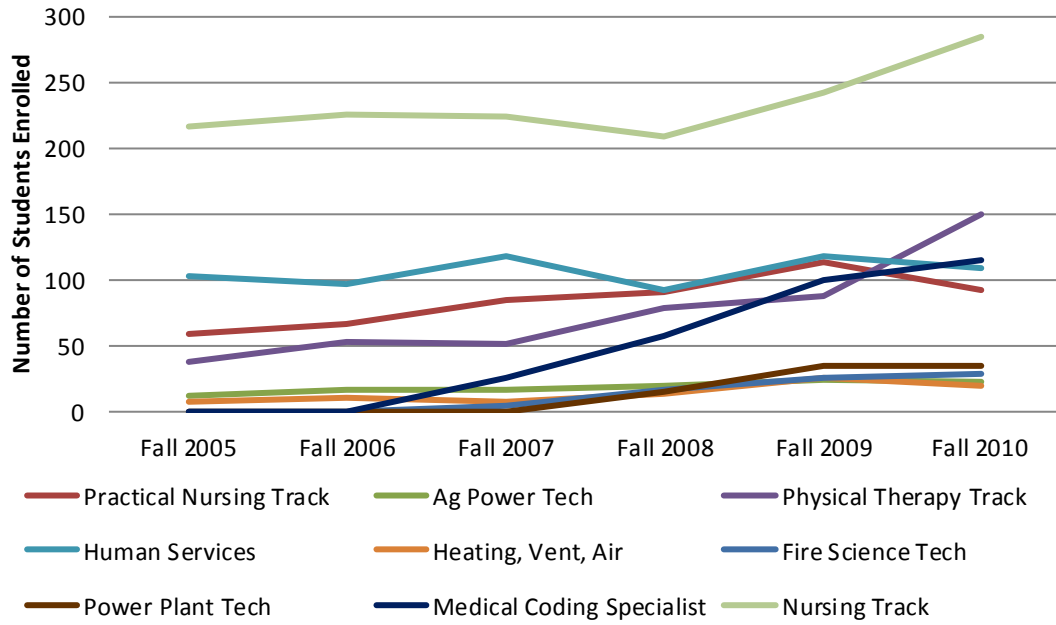
Annual Headcount for Extension Centers



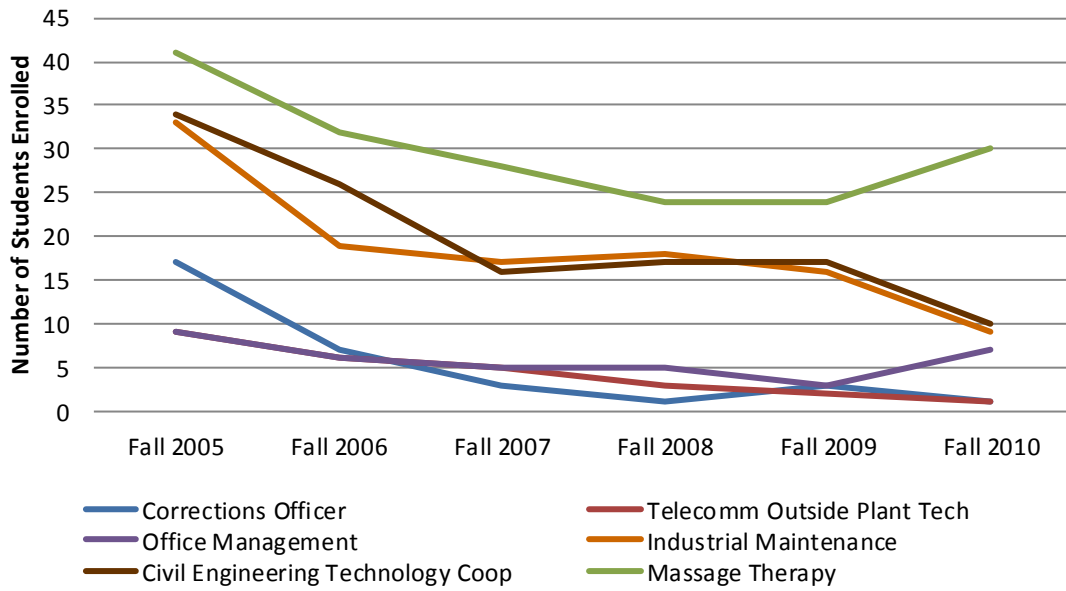
Annual Credit Hours for Extension Centers



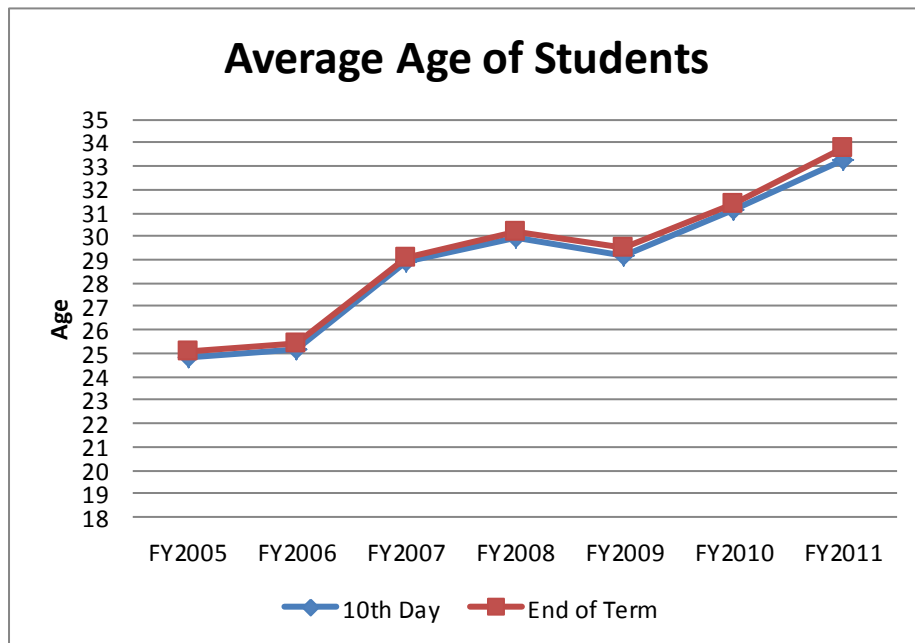
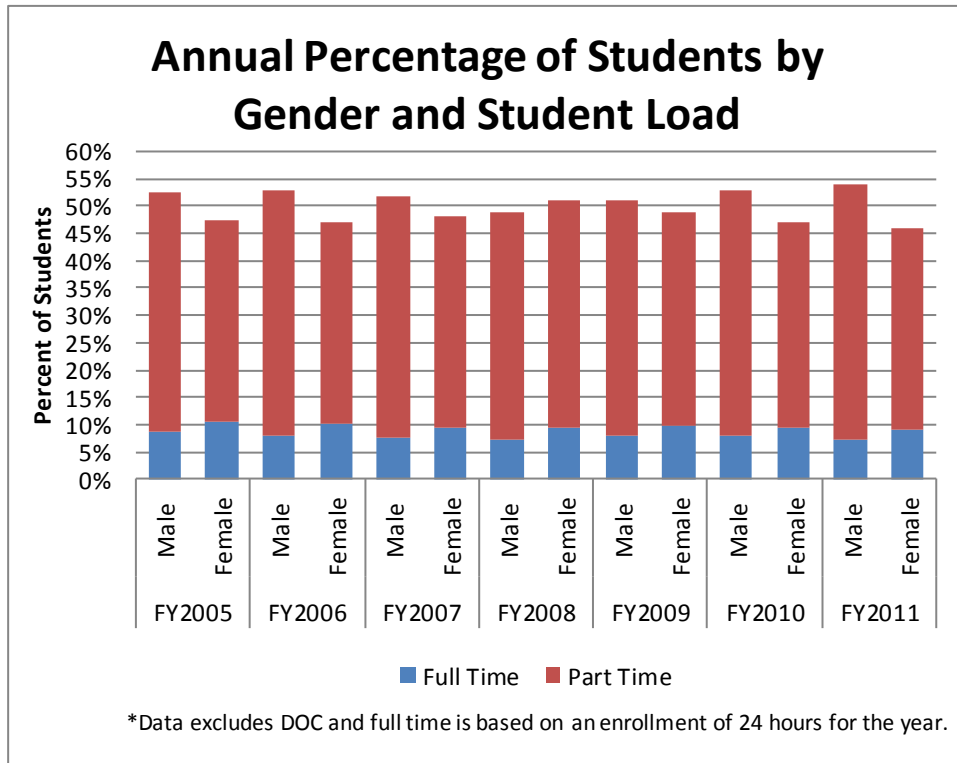
Programs with Increasing Enrollment



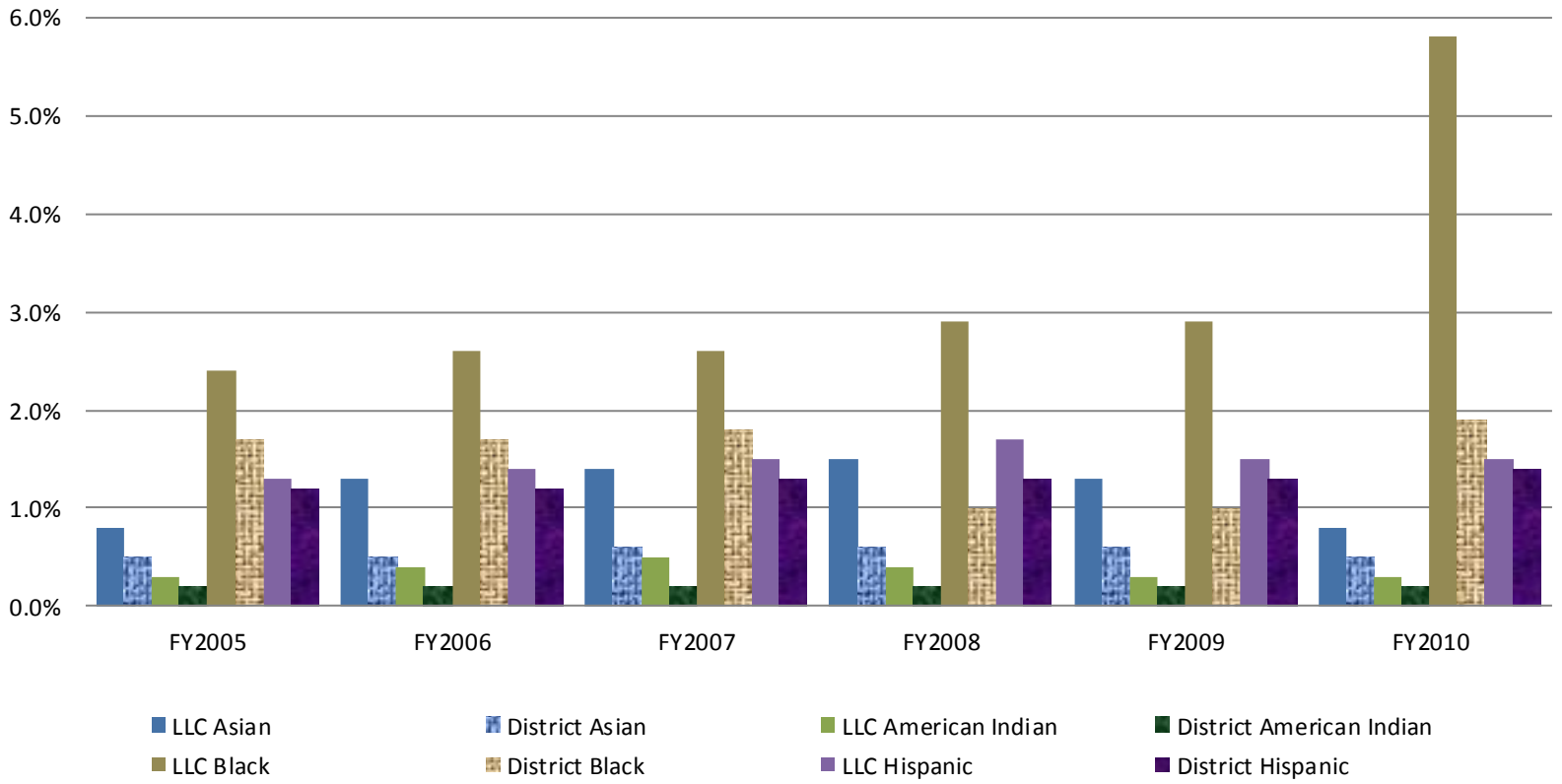
Programs with Decreasing Enrollment



Section C: Student Demographics and Information

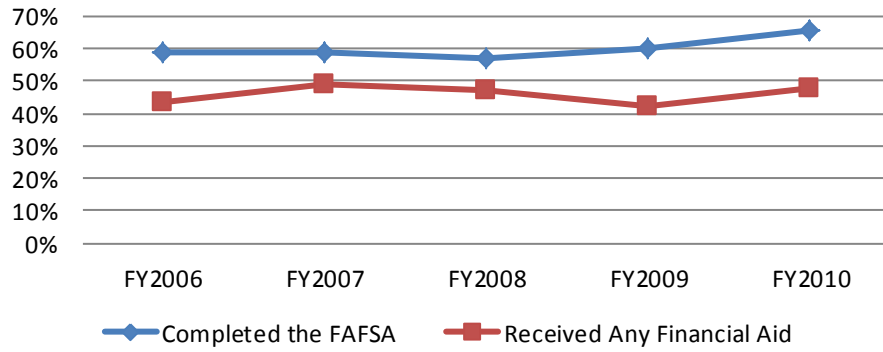


Percent of Minority Students Compared to Percent of Minority Residents in the District

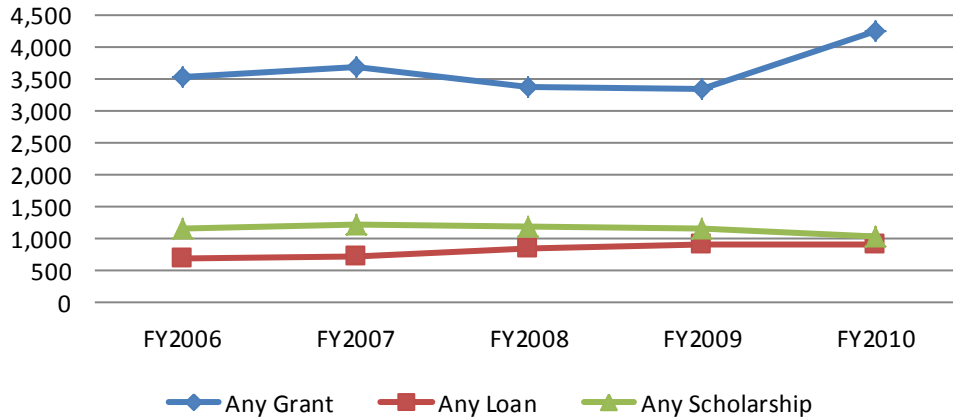


*Data excludes DOC.

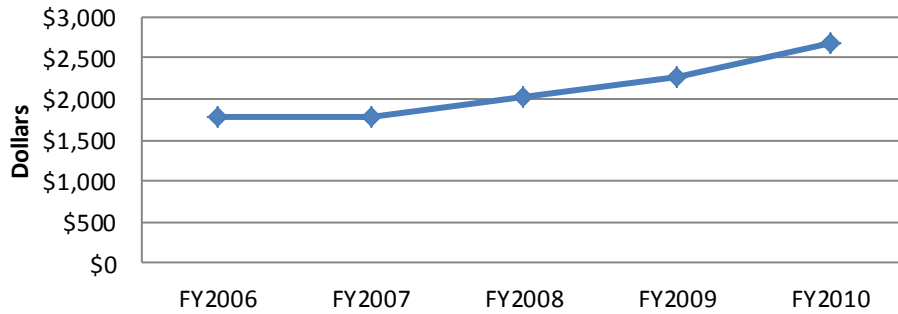
Percent of Students Enrolled in Eligible Programs and Receiving Any Type of Financial Aid



Annual Number of Students Receiving Financial Aid by Type

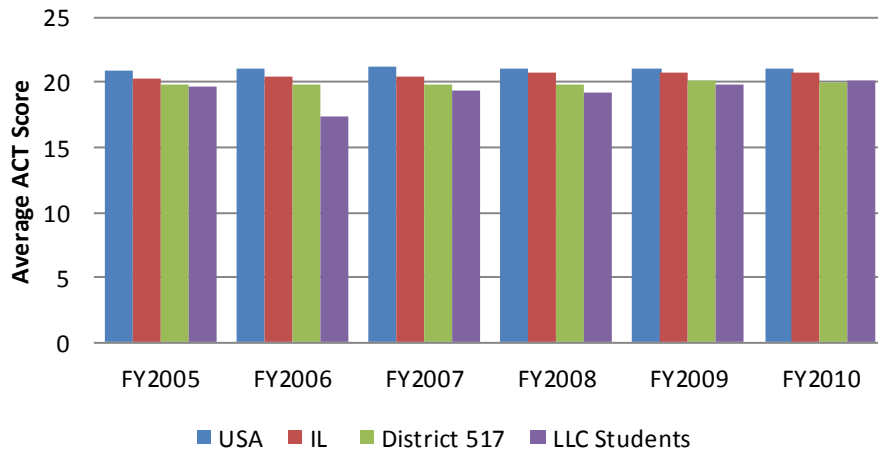


Average Total Amount of Financial Aid Received per Student



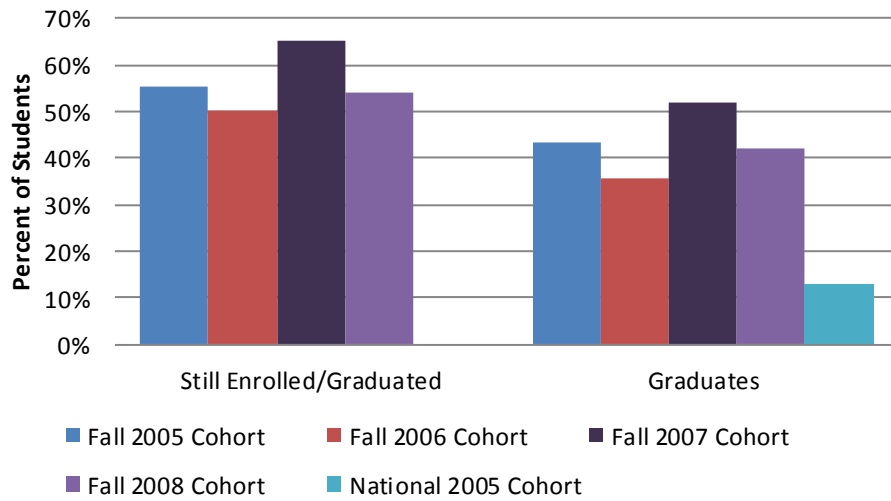
* Financial aid includes any funding the college administers. This amount excludes scholarships paid directly to students.

Comparison of Average ACT Composite Scores

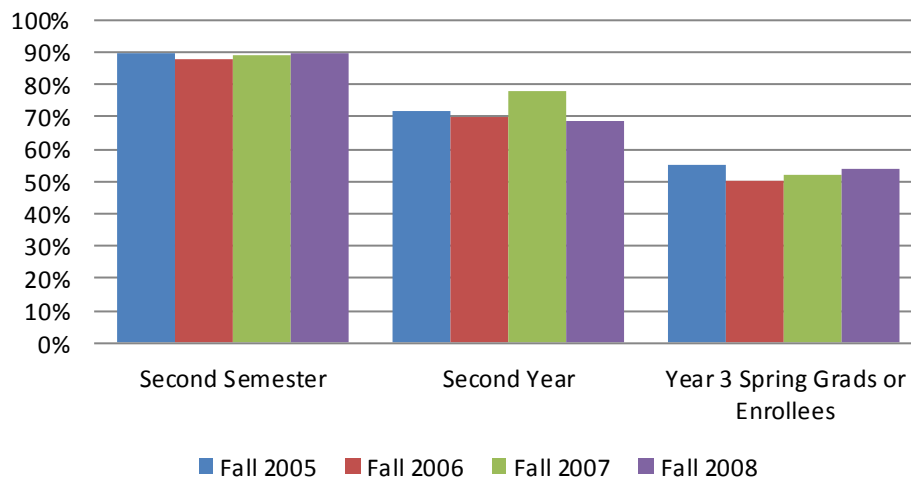


*ACT scores are based on the average scores from recent high school graduates.

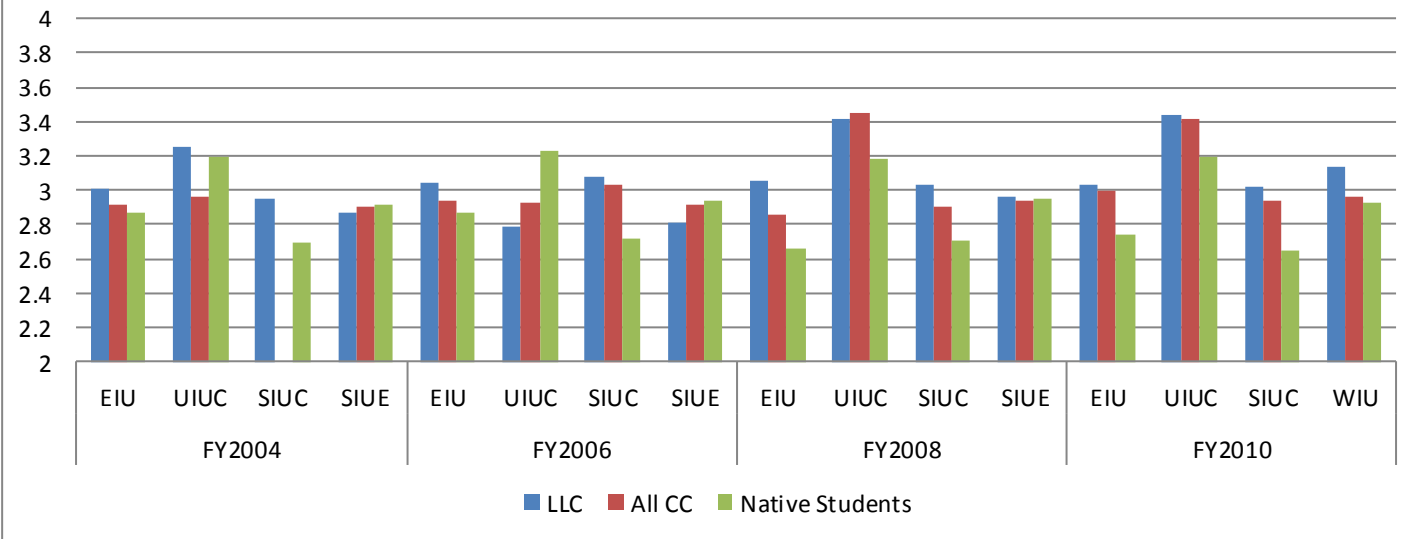
Three Year Retention and Graduation Rates of First Time Full Time Degree Seeking Students



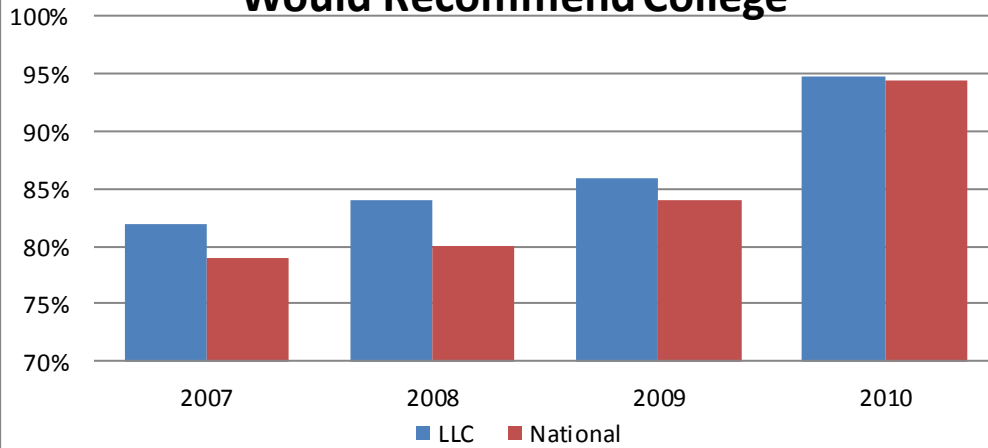
Retention for First Time Full Time Degree Seeking Student Cohorts



Average GPA of Lake Land College Transfer Students Compared to all Other Community College Transfer and Native Students

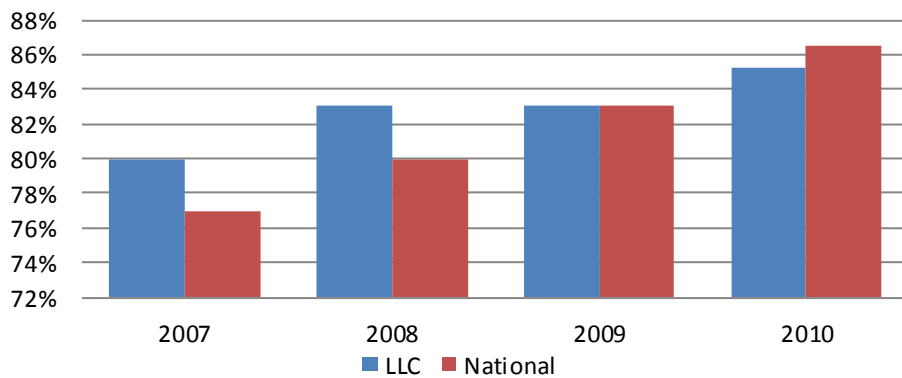


LLC Compared to National Average: 2007-2009 Would Enroll Again, 2010 Would Recommend College



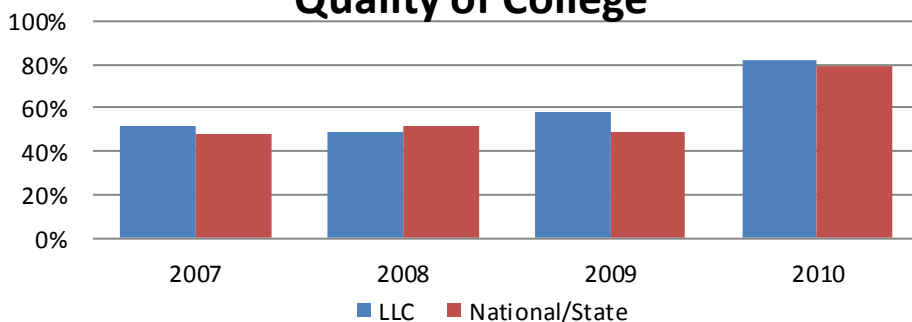
Data Source 2007-2009: Noel Levitz Satisfaction Survey
Data Course 2010: Community College Survey of Student Engagement

LLC Compared to National Average: Satisfied with College Experience



Data Source 2007-2009: Noel Levitz Satisfaction Survey
Data Source 2010: Community College Survey of Student Engagement

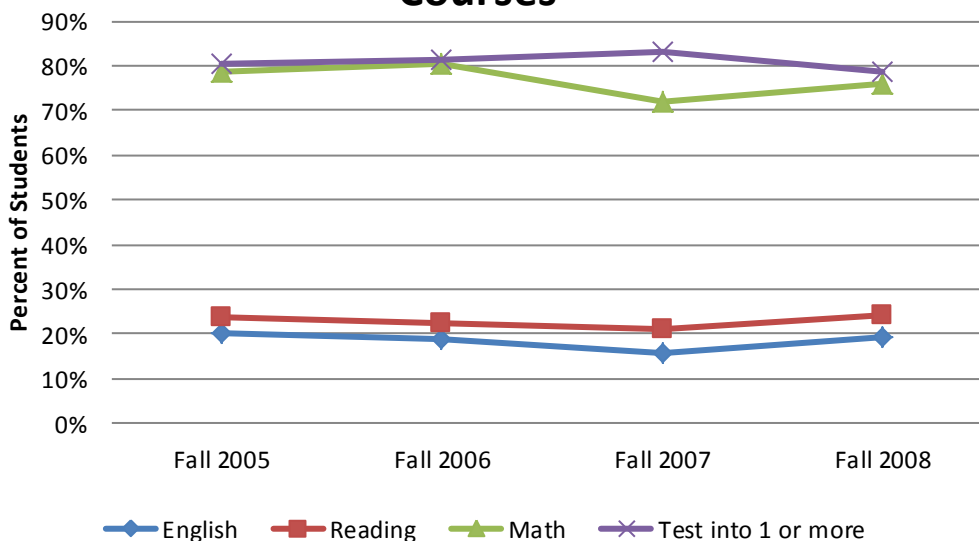
LLC Compared to National Average: 2007-2009 College Experience Better than Expected, 2010 Academic Quality of College



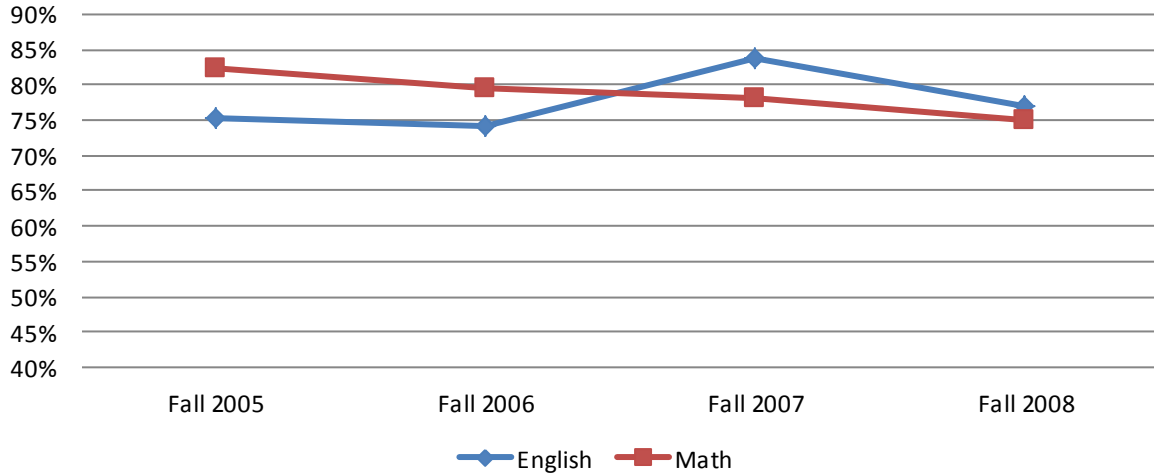
Data Source 2007-2009: Noel Levitz Satisfaction Survey

Data Course 2010: Community College Survey of Student Engagement

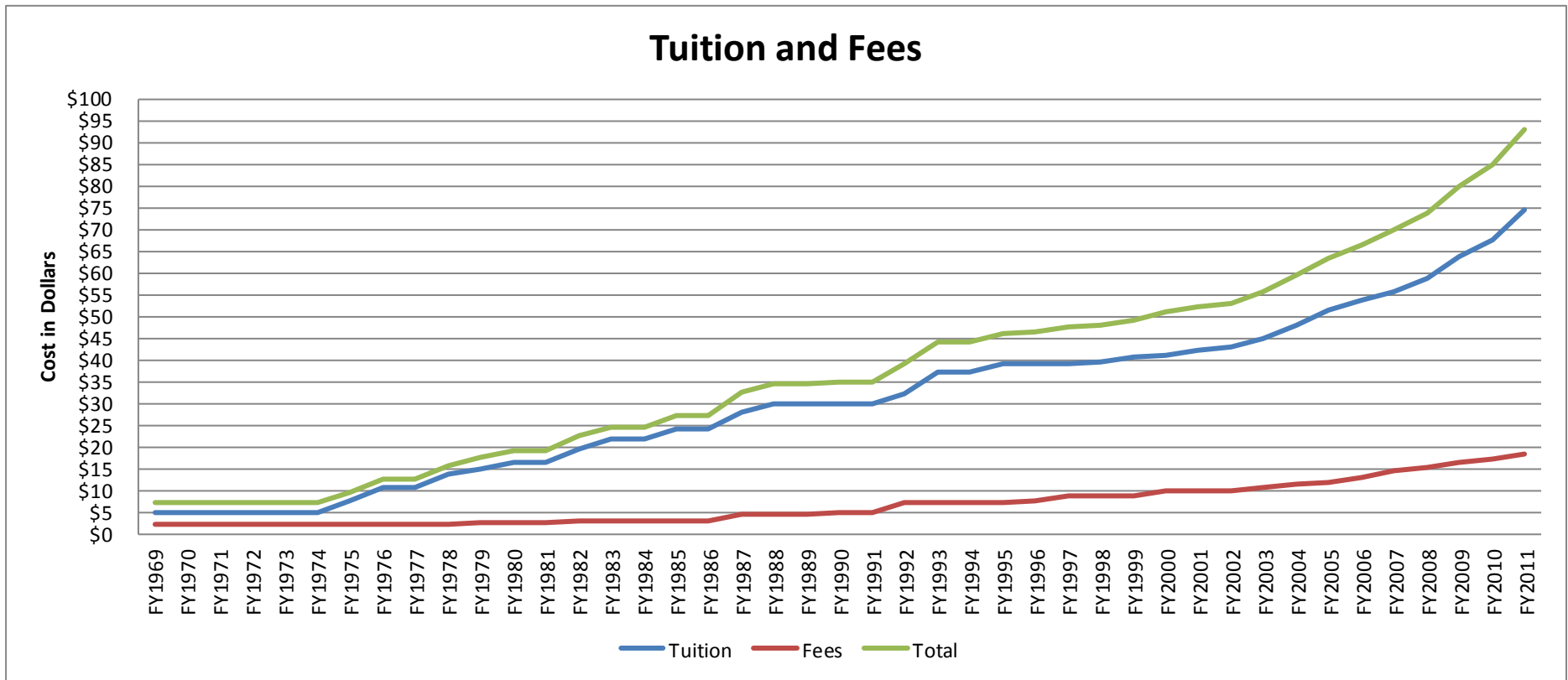
Percentage of First Time Degree Seeking Students Testing into Developmental Courses



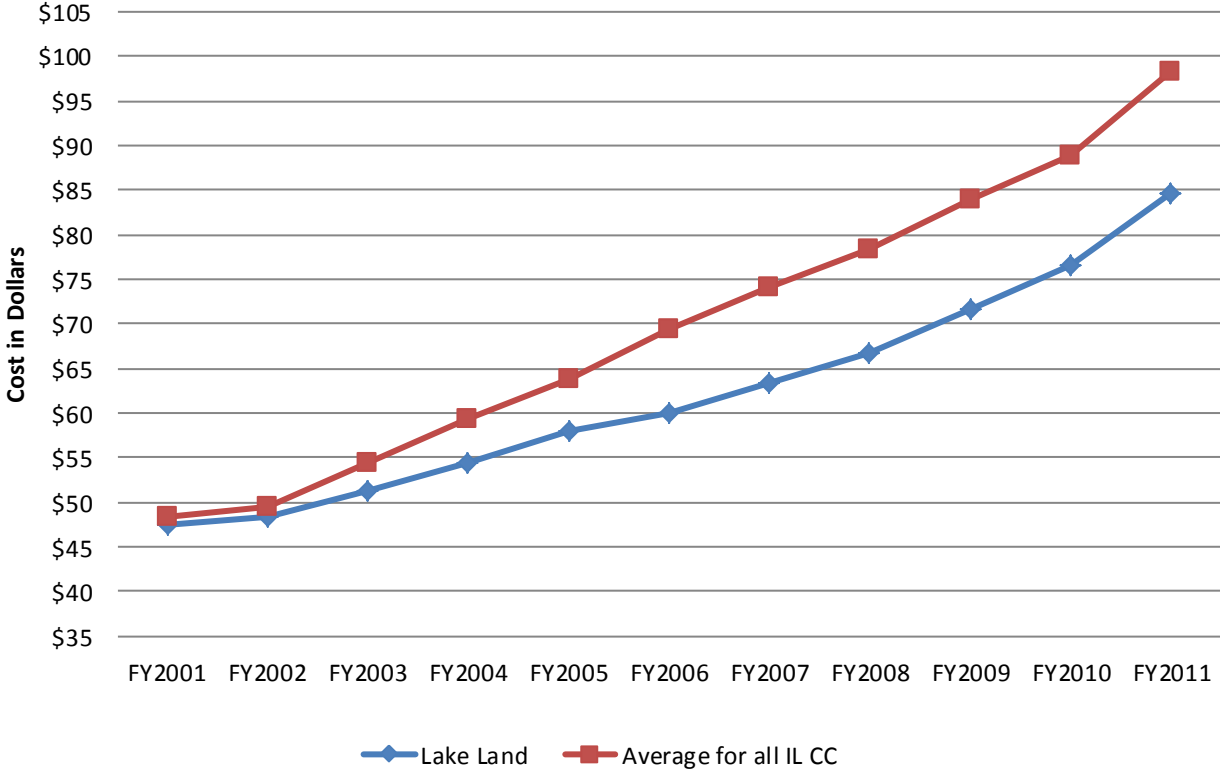
Students Successfully Complete First College Level Course after Final Developmental Course



Section D: Tuition, Fees, and Other Financial Data

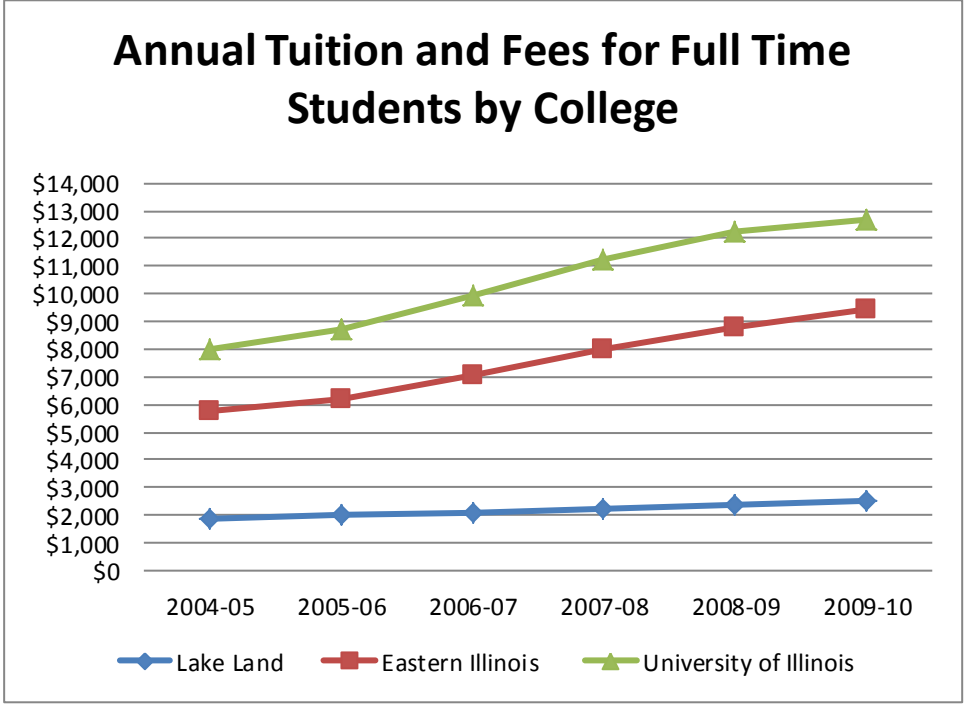


Comparison of Tuition with all Illinois Community Colleges

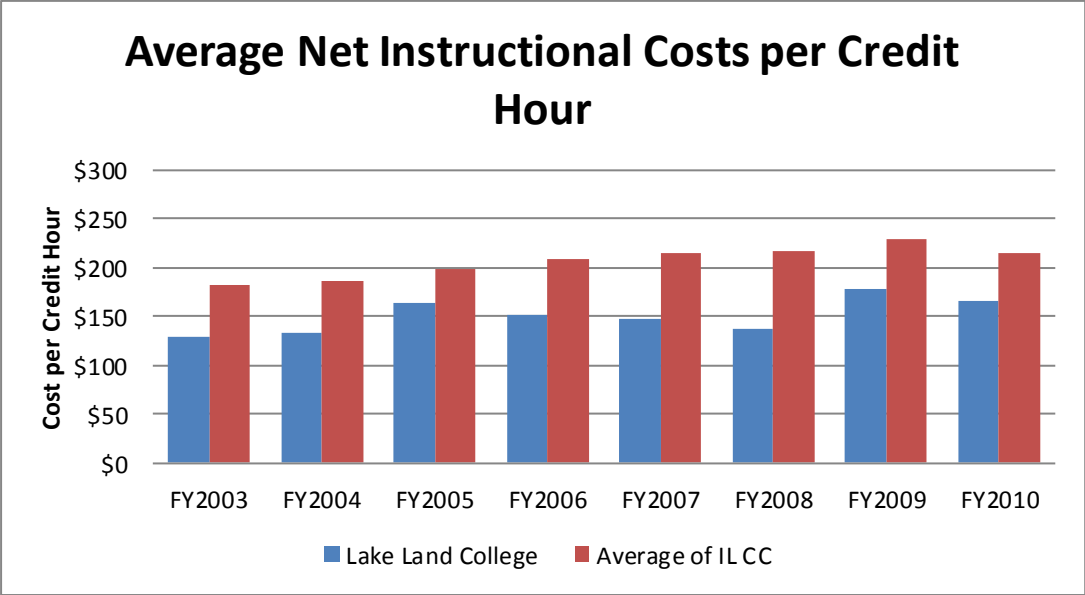


*LLC fees do not include textbook rental fees, since LLC is the only community college in Illinois offering textbook rental.

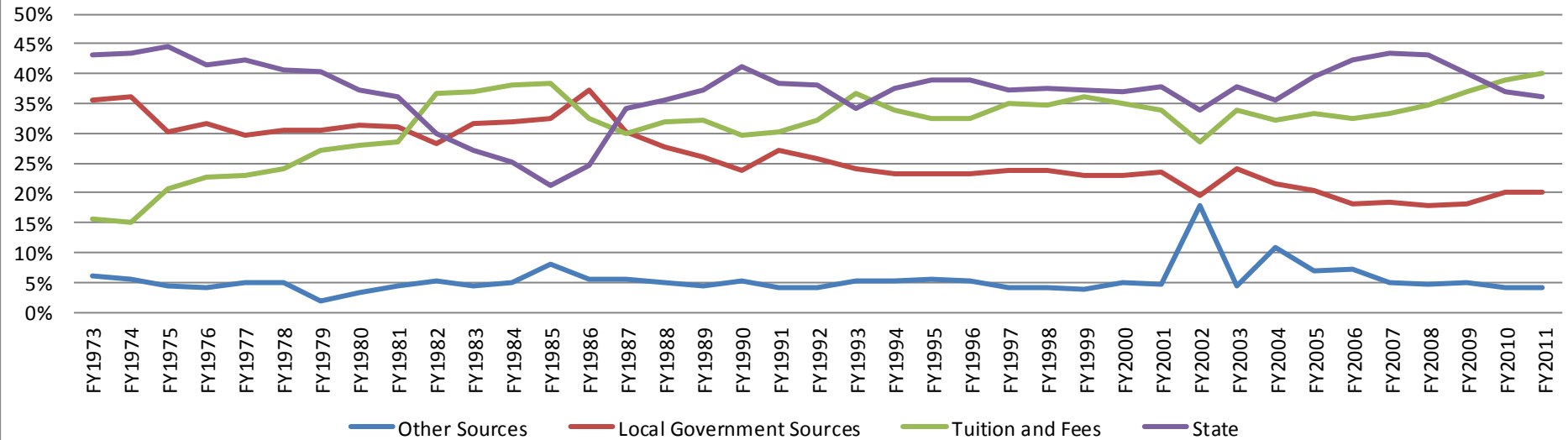
Annual Tuition and Fees for Full Time Students by College



Average Net Instructional Costs per Credit Hour



Percentage of General Fund by Source



Dollar Amount of General Fund by Sources

